

Datasheet for ABIN1782177
anti-BLVRB antibody (AA 38-49)[Go to Product page](#)

3 Images

Overview

Quantity:	100 µg
Target:	BLVRB
Binding Specificity:	AA 38-49
Reactivity:	Human
Host:	Goat
Clonality:	Polyclonal
Conjugate:	This BLVRB antibody is un-conjugated
Application:	Western Blotting (WB), ELISA, Immunohistochemistry (IHC)

Product Details

Purpose:	BLVRB (aa38-49)
Sequence:	SRLPSEGPRP AH
Isotype:	IgG
Cross-Reactivity:	Human
Purification:	Purified from goat serum by ammonium sulphate precipitation followed by antigen affinity chromatography using the immunizing peptide.
Grade:	Verified

Target Details

Target:	BLVRB
---------	-------

Target Details

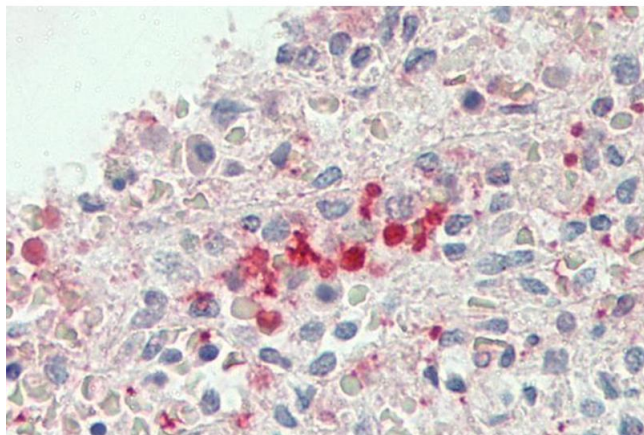
Alternative Name:	BLVRB (BLVRB Products)
Background:	BLVRB, biliverdin reductase B (flavin reductase (NADPH)), BVRB, FLR, SDR43U1, BVR-B, FR, GHBP, NADPH-dependent diaphorase, NADPH-flavin reductase, biliverdin-IX beta-reductase, flavin reductase (NADPH), green heme-binding protein, short chain dehydrogenas
Molecular Weight:	Expected molecular weight 23 kDa
Gene ID:	645
NCBI Accession:	NP_000704

Application Details

Application Notes:	Immunohistochemistry: Paraffin embedded Human Spleen (erythrocytes) and Liver. Recommended concentration: 5 µg/mL. Western Blot: Approx 23 kDa band observed in Human Liver lysates (calculated MW of 22.1 kDa according to NP_000704.1). Recommended concentration: 0.1-0.3 µg/mL. Primary incubation was 1 hour. Peptide ELISA: antibody detection limit dilution 1:128000.
Restrictions:	For Research Use only

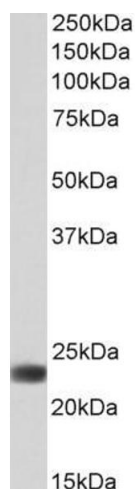
Handling

Format:	Liquid
Concentration:	0.5 mg/mL
Buffer:	Supplied at 0.5 mg/mL in Tris saline, 0.02 % sodium azide, pH 7.3 with 0.5 % bovine serum albumin.
Preservative:	Sodium azide
Precaution of Use:	This product contains Sodium azide: a POISONOUS AND HAZARDOUS SUBSTANCE which should be handled by trained staff only.
Handling Advice:	Minimize freezing and thawing.
Storage:	-20 °C
Storage Comment:	Aliquot and store at -20°C, with minimal freeze/thawing. A working aliquot may be refrigerated at 4°C for a few weeks and still remain viable.



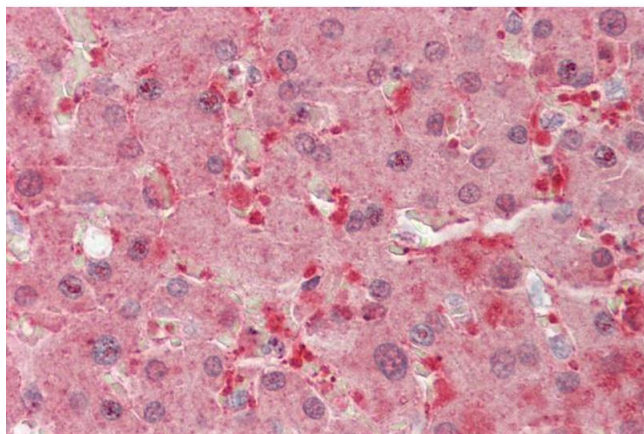
Immunohistochemistry

Image 1. ABIN1782177 (5µg/ml) staining of paraffin embedded Human Spleen. Steamed antigen retrieval with citrate buffer pH 6, AP-staining.



Western Blotting

Image 2. ABIN1782177 (0.1µg/ml) staining of Human Liver lysate (35µg protein in RIPA buffer). Detected by chemiluminescence.



Immunohistochemistry

Image 3. ABIN1782177 (5µg/ml) staining of paraffin embedded Human Liver. Steamed antigen retrieval with citrate buffer pH 6, AP-staining.