

Datasheet for ABIN1782187 anti-CAPG antibody (AA 205-217)



[Go to Product page](#)

3 Images

Overview

Quantity:	100 µg
Target:	CAPG
Binding Specificity:	AA 205-217
Reactivity:	Human, Mouse, Rat, Pig
Host:	Goat
Clonality:	Polyclonal
Conjugate:	This CAPG antibody is un-conjugated
Application:	Western Blotting (WB), ELISA

Product Details

Purpose:	CAPG (aa205-217)
Sequence:	KAQVEIVTDG EEP
Isotype:	IgG
Specificity:	This antibody is expected to recognize isoform 1 (NP_001738.2) only. Reported variants represent identical protein: NP_001243068.1, NP_001738.2.
Cross-Reactivity:	Dog, Human, Pig
Purification:	Purified from goat serum by ammonium sulphate precipitation followed by antigen affinity chromatography using the immunizing peptide.
Grade:	Verified

Target Details

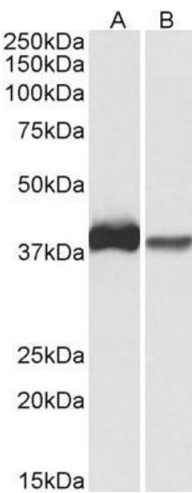
Target:	CAPG
Alternative Name:	CAPG (CAPG Products)
Background:	CAPG, capping protein (actin filament), gelsolin-like, AFCP, MCP, actin regulatory protein CAP-G, actin-regulatory protein CAP-G, gelsolin-like capping protein, macrophage capping protein, macrophage-capping protein
Molecular Weight:	Expected molecular weight 38 kDa
Gene ID:	822
NCBI Accession:	NP_001738
Pathways:	Regulation of Actin Filament Polymerization

Application Details

Application Notes:	Western Blot: Approx 38 kDa band observed in lysates of cell line U937 and of Human, Mouse and Rat Spleen (calculated MW of 38.5 kDa according to NP_001738.2). In Peripheral Blood Lymphocytes, the observed band runs as ~40 kDa. Recommended concentration: 0. Peptide ELISA: antibody detection limit dilution 1:128000.
Restrictions:	For Research Use only

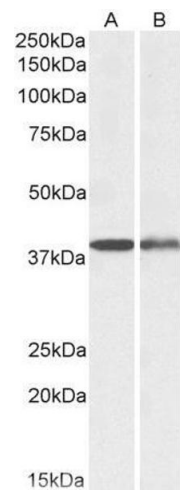
Handling

Format:	Liquid
Concentration:	0.5 mg/mL
Buffer:	Supplied at 0.5 mg/mL in Tris saline, 0.02 % sodium azide, pH 7.3 with 0.5 % bovine serum albumin.
Preservative:	Sodium azide
Precaution of Use:	This product contains Sodium azide: a POISONOUS AND HAZARDOUS SUBSTANCE which should be handled by trained staff only.
Handling Advice:	Minimize freezing and thawing.
Storage:	-20 °C
Storage Comment:	Aliquot and store at -20°C, with minimal freeze/thawing. A working aliquot may be refrigerated at 4°C for a few weeks and still remain viable.



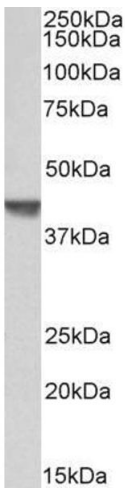
Western Blotting

Image 1. ABIN1782187 (0.3µg/ml) staining of U937 (A) and Human Spleen (B) lysates (35µg protein in RIPA buffer). Primary incubation was 1 hour. Detected by chemiluminescence.



Western Blotting

Image 2. ABIN1782187 (0.1µg/ml) staining of Mouse (A) and Rat Spleen (B) lysates (35µg protein in RIPA buffer). Primary incubation was 1 hour. Detected by chemiluminescence.



Western Blotting

Image 3. ABIN1782187 (0.3µg/ml) staining of Pig Spleen lysate (35µg protein in RIPA buffer). Primary incubation was 1 hour. Detected by chemiluminescence.