



[Go to Product page](#)

Datasheet for ABIN1782407
ENPP1 Protein (AA 1-873) (GST tag)

1 Image

Overview

Quantity:	10 µg
Target:	ENPP1
Protein Characteristics:	AA 1-873
Origin:	Human
Source:	Wheat germ
Protein Type:	Recombinant
Purification tag / Conjugate:	This ENPP1 protein is labelled with GST tag.
Application:	Western Blotting (WB), ELISA, Affinity Purification (AP), Antibody Array (AA)

Product Details

Purpose:	ENPP1 (Human) Recombinant Protein (P01)
Sequence:	MDVGEEPLEK AARARTAKDP NTYKVLVSLVL SVCVLTITLG CIFGLKPSCA KEVKSCCKGRC FERTFGNCRC DAACVELGNC CLDYQETCIE PEHIWTCNKF RCGEKRLTRS LCACSDDCCKD KGDCINYS VCQGEKSWVE EPCESINEPQ CPAGFETPPT LLFSLDGFRA EYLHTWGGLL PVISKLKKCG TYTKNMRPVY PTKTFPNHYS IVTGLYPESH GIIDNKMYDP KMNASFSLKS KEKFNPEWYK GEPIWVTAKY QGLKSGTFFW PGSDVEINGI FPDYKMYNG SVPFEERILA VLQWLQPKD ERPHFYTYL EEPDSSGHSY GVSSEVIKA LQRVDGMVGM LMDGLKELNL HRCLNLILIS DHGMEQGSC KYYILNKYLG DVKNIKVIYG PAARLRPSDV PDKYYSFNYE GIARNLSCRE PNQHFKPYLK HFLPKRLHFA KSDRIEPLTF YLDPQWQLAL NPSEKCYCGS GFHGSDNVFS NMQALFVGYG PGFKHGIEAD TFENIEVYNL MCDLLNLTPA PNINGTHGSLN HLLKNPVYTP KHPKEVHPLV QCPFTRNPRD NLGCSCNPSI LPIEDFQTQF NLTVAEEKII KHETLPYGRP RVLQKENTIC LLSQHQFMSG YSQDILMPLW TSYTVDRNDS FSTEDFSNCL

Product Details

YQDFRIPLSP VHKCSFYKNN TKVSYGFLSP PQLNKNSSGI YSEALLTTNI VPMYQSFQVI
WRYFHDTLLR KYAEERNGVN VVSGPVDFD YDGRCDLEN LRQKRRVIRN QEILIPTHFF
IVLTSCKDTS QTPLHCENLD TLAFILPHRT DNSESCVHGK HDSSWVEELL MLHRARITDV
EHITGLSFYQ QRKEPVSIL KLKTHLPTFS QED

Characteristics: Human ENPP1 full-length ORF (NP_006199.1, 1 a.a. - 873 a.a.) recombinant protein with GST-tag at N-terminal.

Purification: in vitro wheat germ expression system

Target Details

Target: ENPP1

Alternative Name: ENPP1 ([ENPP1 Products](#))

Background: Full Gene Name: ectonucleotide pyrophosphatase/phosphodiesterase 1
Synonyms: M6S1,NPP1,NPPS,PC-1,PCA1,PDNP1

Gene ID: 5167

NCBI Accession: [NM_006208](#)

Pathways: [Regulation of Carbohydrate Metabolic Process](#)

Application Details

Application Notes: Optimal working dilution should be determined by the investigator.

Comment: Preparation method: in vitro, wheat germ expression system
Product Quality tested by: 12.5% SDS-PAGE Stained with Coomassie Blue.

Restrictions: For Research Use only

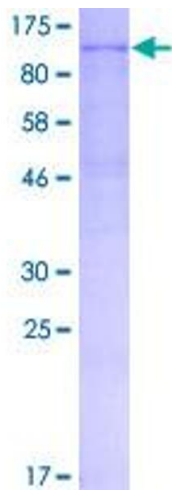
Handling

Buffer: 50 mM Tris-HCl, 10 mM reduced Glutathione, pH =8.0 in the elution buffer.

Handling Advice: Aliquot to avoid repeated freezing and thawing.

Storage: -80 °C

Storage Comment: Best use within three months from the date of receipt of this protein.



SDS-PAGE

Image 1.