

Datasheet for ABIN1782459
CFP Protein (AA 1-469) (GST tag)



[Go to Product page](#)

1 Image

Overview

Quantity:	10 µg
Target:	CFP
Protein Characteristics:	AA 1-469
Origin:	Human
Source:	Wheat germ
Protein Type:	Recombinant
Purification tag / Conjugate:	This CFP protein is labelled with GST tag.
Application:	Western Blotting (WB), ELISA, Antibody Array (AA), Affinity Purification (AP)

Product Details

Purpose:	CFP (Human) Recombinant Protein (P01)
Sequence:	<p>MITEGAQAPR LLLPLLLLL TLPATGSDPV LCFTQYEES GKCKGLLGG VSVEDCCLNT AFAYQKRSGG LCQPCRSRW SLWSTWAPCS VTCSEGSQLR YRRCVWNGQ CSGKVAPGTL EWQLQACEDQ QCCPEMGGWS GWGPWEPCSV TCSKGTRTRR RACNHPAPKC GGHCPCGQAQE SEACDTQQVC PTHGAWATWG PWTPCSASCH GGPHEPKETR SRKCSAPEPS QKPPGKPCPG LAYEQRRCTG LPPCPVAGGW GPWGPVSPCP VTCGLGQTME QRTCNHPVPQ HGGPFCAGDA TRTHICNTAV PCPVDGEWDS WGEWSPCIRR NMKSISCQEI PGQQRGRTC RGRKFDGHRC AGQQQDIRHC YSIQHCPLKG SWSEWSTWGL CMPPCGPNPT RARQLCTPL LPKYPTVSM VEGQGEKNVT FWGRPLPRCE ELQGQKLVE EKRPLHVPA CKDPEEEEL</p>
Characteristics:	Human CFP full-length ORF (AAH15756.1, 1 a.a. - 469 a.a.) recombinant protein with GST-tag at N-terminal.

Product Details

Purification: in vitro wheat germ expression system

Target Details

Target: CFP

Alternative Name: CFP ([CFP Products](#))

Background: Full Gene Name: complement factor properdin
Synonyms: BFD,PFC,PFD,PROPERDIN

Gene ID: 5199

Pathways: [Complement System](#)

Application Details

Application Notes: Optimal working dilution should be determined by the investigator.

Comment: Preparation method: in vitro, wheat germ expression system
Product Quality tested by: 12.5% SDS-PAGE Stained with Coomassie Blue.

Restrictions: For Research Use only

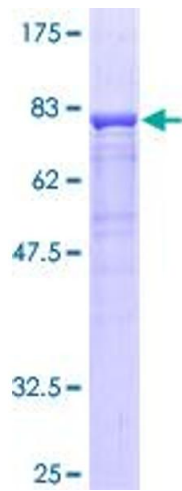
Handling

Buffer: 50 mM Tris-HCl, 10 mM reduced Glutathione, pH =8.0 in the elution buffer.

Handling Advice: Aliquot to avoid repeated freezing and thawing.

Storage: -80 °C

Storage Comment: Best use within three months from the date of receipt of this protein.



SDS-PAGE

Image 1.