



[Go to Product page](#)

Datasheet for ABIN1783114

PKC eta Protein (AA 1-100) (GST tag)

1 Image

Overview

Quantity:	10 µg
Target:	PKC eta (PRKCH)
Protein Characteristics:	AA 1-100
Origin:	Human
Source:	Wheat germ
Protein Type:	Recombinant
Purification tag / Conjugate:	This PKC eta protein is labelled with GST tag.
Application:	Western Blotting (WB), ELISA, Affinity Purification (AP), Antibody Array (AA)

Product Details

Purpose:	PRKCH (Human) Recombinant Protein (Q01)
Sequence:	MSSGTMKFNG YLRVRIGEAV GLQPTRWSLR HSLFKKGHQL LDPYLTVSVD QVRVGQTSTK QKTNKPTYNE EFCANVTDGG HLELAVFHET PLGYDHFVAN
Characteristics:	Human PRKCH partial ORF (NP_006246, 1 a.a. - 100 a.a.) recombinant protein with GST-tag at N-terminal.
Purification:	in vitro wheat germ expression system

Target Details

Target:	PKC eta (PRKCH)
Alternative Name:	PRKCH (PRKCH Products)

Target Details

Background:	Full Gene Name: protein kinase C, eta Synonyms: MGC26269,MGC5363,PKC-L,PKCL,PRKCL,nPKC-eta
Gene ID:	5583
NCBI Accession:	NM_006255
Pathways:	Myometrial Relaxation and Contraction , Thromboxane A2 Receptor Signaling

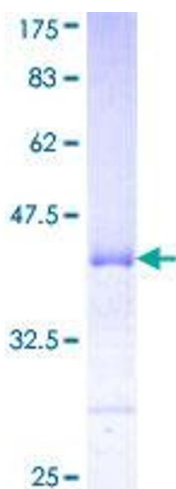
Application Details

Application Notes:	Optimal working dilution should be determined by the investigator.
Comment:	Preparation method: in vitro, wheat germ expression system Product Quality tested by: 12.5% SDS-PAGE Stained with Coomassie Blue.
Restrictions:	For Research Use only

Handling

Buffer:	50 mM Tris-HCl, 10 mM reduced Glutathione, pH =8.0 in the elution buffer.
Handling Advice:	Aliquot to avoid repeated freezing and thawing.
Storage:	-80 °C
Storage Comment:	Best use within three months from the date of receipt of this protein.

Images



SDS-PAGE

Image 1.