



[Go to Product page](#)

Datasheet for ABIN1783176

MAPK10 Protein (AA 219-319) (GST tag)

1 Image

Overview

Quantity:	10 µg
Target:	MAPK10
Protein Characteristics:	AA 219-319
Origin:	Human
Source:	Wheat germ
Protein Type:	Recombinant
Purification tag / Conjugate:	This MAPK10 protein is labelled with GST tag.
Application:	Western Blotting (WB), ELISA, Affinity Purification (AP), Antibody Array (AA)

Product Details

Purpose:	MAPK10 (Human) Recombinant Protein (Q01)
Sequence:	DPAEVEAPPP QIYDKQLDER EHTIEEWKEL IYKEVMNSEE KTKNGVVKGQ PSPSGAAVNS SESLPPSSSV NDISSMSTDQ TLASDTDSSL EASAGPLGCC R
Characteristics:	Human MAPK10 partial ORF (AAH65516, 219 a.a. - 319 a.a.) recombinant protein with GST-tag at N-terminal.
Purification:	in vitro wheat germ expression system

Target Details

Target:	MAPK10
Alternative Name:	MAPK10 (MAPK10 Products)

Target Details

Background:	Full Gene Name: mitogen-activated protein kinase 10 Synonyms: FLJ12099,FLJ33785,JNK3,JNK3A,MGC50974,PRKM10,p493F12,p54bSAPK
Gene ID:	5602
Pathways:	MAPK Signaling , WNT Signaling , TLR Signaling , Fc-epsilon Receptor Signaling Pathway , Activation of Innate immune Response , Hepatitis C , Toll-Like Receptors Cascades

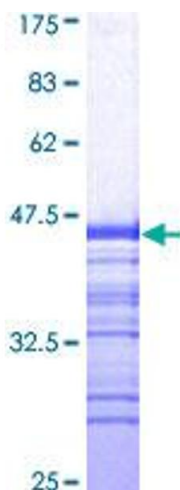
Application Details

Application Notes:	Optimal working dilution should be determined by the investigator.
Comment:	Preparation method: in vitro, wheat germ expression system Product Quality tested by: 12.5% SDS-PAGE Stained with Coomassie Blue.
Restrictions:	For Research Use only

Handling

Buffer:	50 mM Tris-HCl, 10 mM reduced Glutathione, pH =8.0 in the elution buffer.
Handling Advice:	Aliquot to avoid repeated freezing and thawing.
Storage:	-80 °C
Storage Comment:	Best use within three months from the date of receipt of this protein.

Images



SDS-PAGE

Image 1.