



[Go to Product page](#)

Datasheet for ABIN1783503

Pleiotrophin Protein (PTN) (AA 1-168) (GST tag)

1 Image

Overview

Quantity:	10 µg
Target:	Pleiotrophin (PTN)
Protein Characteristics:	AA 1-168
Origin:	Human
Source:	Wheat germ
Protein Type:	Recombinant
Purification tag / Conjugate:	This Pleiotrophin protein is labelled with GST tag.
Application:	Western Blotting (WB), ELISA, Affinity Purification (AP), Antibody Array (AA)

Product Details

Purpose:	PTN (Human) Recombinant Protein (P01)
Sequence:	MQAQQYQQQR RKFAAAFLAF IFILAAVDTA EAGKKEKPEK KVKKSDCGEW QWSVCVPTSG DCGLGTREGT RTGAECKQTM KTQRCKIPCN WKKQFGAECK YQFQAWGEC D LNTALKTRTG SLKRALHNAE CQKTVTISKP CGKLTKPKPQ AESKKKKKEG KKQEKMLD
Characteristics:	Human PTN full-length ORF (NP_002816, 1 a.a. - 168 a.a.) recombinant protein with GST-tag at N-terminal.
Purification:	in vitro wheat germ expression system

Target Details

Target:	Pleiotrophin (PTN)
Alternative Name:	PTN (PTN Products)

Target Details

Background:	Full Gene Name: pleiotrophin Synonyms: HARP,HBGF8,HBNF,NEGF1
Gene ID:	5764
NCBI Accession:	NM_002825
Pathways:	RTK Signaling

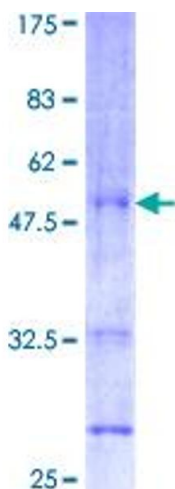
Application Details

Application Notes:	Optimal working dilution should be determined by the investigator.
Comment:	Preparation method: in vitro, wheat germ expression system Product Quality tested by: 12.5% SDS-PAGE Stained with Coomassie Blue.
Restrictions:	For Research Use only

Handling

Buffer:	50 mM Tris-HCl, 10 mM reduced Glutathione, pH =8.0 in the elution buffer.
Handling Advice:	Aliquot to avoid repeated freezing and thawing.
Storage:	-80 °C
Storage Comment:	Best use within three months from the date of receipt of this protein.

Images



SDS-PAGE

Image 1.