

Datasheet for ABIN1783974

RNASE6 Protein (AA 24-150) (GST tag)[Go to Product page](#)**1** Image

Overview

Quantity:	10 µg
Target:	RNASE6
Protein Characteristics:	AA 24-150
Origin:	Human
Source:	Wheat germ
Protein Type:	Recombinant
Purification tag / Conjugate:	This RNASE6 protein is labelled with GST tag.
Application:	ELISA, Western Blotting (WB), Antibody Array (AA), Affinity Purification (AP)

Product Details

Purpose:	RNASE6 (Human) Recombinant Protein (P01)
Sequence:	WPKRLTKAHW FEIQHIQPSP LQCNRAMSGI NNYTQHCKHQ NTFLHDSFQN VAAVCDLLSI VCKNRRHNCH QSSKPVNMTD CRLTSGKYPQ CRYSAQAQYK FFIVACDPPQ KSDPPYKLVP VHLDSIL
Characteristics:	Human RNASE6 full-length ORF (AAH20848, 24 a.a. - 150 a.a.) recombinant protein with GST-tag at N-terminal.
Purification:	in vitro wheat germ expression system

Target Details

Target:	RNASE6
Alternative Name:	RNASE6 (RNASE6 Products)

Target Details

Background:	Full Gene Name: ribonuclease, RNase A family, k6 Synonyms: RNS6,RNasek6
Gene ID:	6039

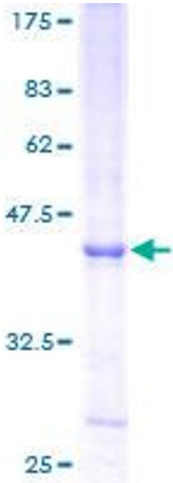
Application Details

Application Notes:	Optimal working dilution should be determined by the investigator.
Comment:	Preparation method: in vitro, wheat germ expression system Product Quality tested by: 12.5% SDS-PAGE Stained with Coomassie Blue.
Restrictions:	For Research Use only

Handling

Buffer:	50 mM Tris-HCl, 10 mM reduced Glutathione, pH =8.0 in the elution buffer.
Handling Advice:	Aliquot to avoid repeated freezing and thawing.
Storage:	-80 °C
Storage Comment:	Best use within three months from the date of receipt of this protein.

Images



SDS-PAGE

Image 1.