



[Go to Product page](#)

Datasheet for ABIN1784050

## RPL4 Protein (AA 251-350) (GST tag)

### 1 Image

#### Overview

Quantity:	10 µg
Target:	RPL4
Protein Characteristics:	AA 251-350
Origin:	Human
Source:	Wheat germ
Protein Type:	Recombinant
Purification tag / Conjugate:	This RPL4 protein is labelled with GST tag.
Application:	ELISA, Western Blotting (WB), Affinity Purification (AP), Antibody Array (AA)

#### Product Details

Purpose:	RPL4 (Human) Recombinant Protein (Q01)
Sequence:	IWTESAFRKL DELYGTWRKA ASLKSNNYLP MHKMINTDLS RILKSPEIQR ALRAPRKKIH RRVLKKNPLK NLRIMLKLNP YAKTMRRNTI LRQARNHKLR
Characteristics:	Human RPL4 partial ORF ( NP_000959, 251 a.a. - 350 a.a.) recombinant protein with GST-tag at N-terminal.
Purification:	in vitro wheat germ expression system

#### Target Details

Target:	RPL4
Alternative Name:	RPL4 ( <a href="#">RPL4 Products</a> )

## Target Details

Background: Full Gene Name: ribosomal protein L4  
Synonyms:

Gene ID: 6124

NCBI Accession: [NM\\_000968](#)

## Application Details

Application Notes: Optimal working dilution should be determined by the investigator.

Comment: Preparation method: in vitro, wheat germ expression system  
Product Quality tested by: 12.5% SDS-PAGE Stained with Coomassie Blue.

Restrictions: For Research Use only

## Handling

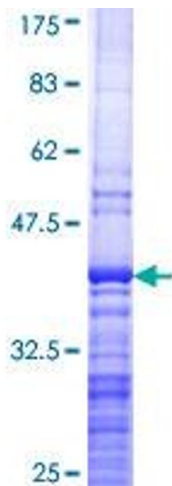
Buffer: 50 mM Tris-HCl, 10 mM reduced Glutathione, pH =8.0 in the elution buffer.

Handling Advice: Aliquot to avoid repeated freezing and thawing.

Storage: -80 °C

Storage Comment: Best use within three months from the date of receipt of this protein.

## Images



### SDS-PAGE

Image 1.