



[Go to Product page](#)

Datasheet for ABIN1784104

RPL24 Protein (AA 1-157) (GST tag)

1 Image

Overview

Quantity:	10 µg
Target:	RPL24
Protein Characteristics:	AA 1-157
Origin:	Human
Source:	Wheat germ
Protein Type:	Recombinant
Purification tag / Conjugate:	This RPL24 protein is labelled with GST tag.
Application:	ELISA, Western Blotting (WB), Antibody Array (AA), Affinity Purification (AP)

Product Details

Purpose:	RPL24 (Human) Recombinant Protein (P01)
Sequence:	MKVELCSFSG YKIYPGHGRR YARTDGKVFQ FLNAKCESAF LSKRNPRQIN WTVLYRRKHK KGQSEEQKK RTRRAVKFQR AITGASLADI MAKRNQKPEV RKAQREQAIR AAKEAKKAKQ ASKKTAMAAA KAPTKAAPKQ KIVKPVKVSA PRVGGKR
Characteristics:	Human RPL24 full-length ORF (NP_000977.1, 1 a.a. - 157 a.a.) recombinant protein with GST-tag at N-terminal.
Purification:	in vitro wheat germ expression system

Target Details

Target:	RPL24
Alternative Name:	RPL24 (RPL24 Products)

Target Details

Background: Full Gene Name: ribosomal protein L24

Synonyms:

Gene ID: 6152

NCBI Accession: [NM_000986](#)

Pathways: [Ribonucleoprotein Complex Subunit Organization](#), [Ribosome Assembly](#)

Application Details

Application Notes: Optimal working dilution should be determined by the investigator.

Comment: Preparation method: in vitro, wheat germ expression system
Product Quality tested by: 12.5% SDS-PAGE Stained with Coomassie Blue.

Restrictions: For Research Use only

Handling

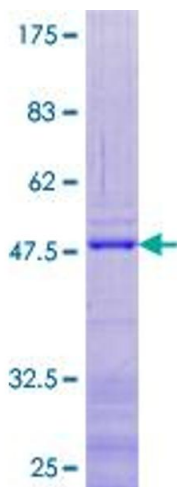
Buffer: 50 mM Tris-HCl, 10 mM reduced Glutathione, pH =8.0 in the elution buffer.

Handling Advice: Aliquot to avoid repeated freezing and thawing.

Storage: -80 °C

Storage Comment: Best use within three months from the date of receipt of this protein.

Images



SDS-PAGE

Image 1.