



[Go to Product page](#)

Datasheet for ABIN1784205

RPS6KA3 Protein (AA 631-740) (GST tag)

1 Image

Overview

Quantity:	10 µg
Target:	RPS6KA3
Protein Characteristics:	AA 631-740
Origin:	Human
Source:	Wheat germ
Protein Type:	Recombinant
Purification tag / Conjugate:	This RPS6KA3 protein is labelled with GST tag.
Application:	ELISA, Western Blotting (WB), Affinity Purification (AP), Antibody Array (AA)

Product Details

Purpose:	RPS6KA3 (Human) Recombinant Protein (Q01)
Sequence:	ARIGSGKFSL SGGYWNSVSD TAKDLVSKML HVDPHQLTA ALVLRHPWIV HWDQLPQYQL NRQDAPHLVK GAMAATYSAL NRNQSPVLEP VGRSTLAQRR GIKKITSTAL
Characteristics:	Human RPS6KA3 partial ORF (NP_004577, 631 a.a. - 740 a.a.) recombinant protein with GST-tag at N-terminal.
Purification:	in vitro wheat germ expression system

Target Details

Target:	RPS6KA3
Alternative Name:	RPS6KA3 (RPS6KA3 Products)

Target Details

Background:	Full Gene Name: ribosomal protein S6 kinase, 90 kDa, polypeptide 3 Synonyms: CLS,HU-3,ISPK-1,MAPKAPK1B,MRX19,RSK,RSK2,S6K-alpha3,p90-RSK2,pp90RSK2
Gene ID:	6197
NCBI Accession:	NM_004586
Pathways:	MAPK Signaling , Neurotrophin Signaling Pathway , Activation of Innate immune Response , Toll-Like Receptors Cascades

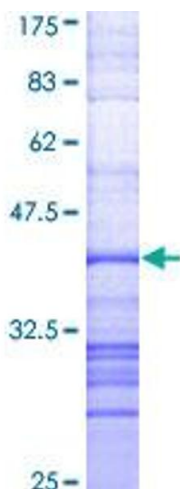
Application Details

Application Notes:	Optimal working dilution should be determined by the investigator.
Comment:	Preparation method: in vitro, wheat germ expression system Product Quality tested by: 12.5% SDS-PAGE Stained with Coomassie Blue.
Restrictions:	For Research Use only

Handling

Buffer:	50 mM Tris-HCl, 10 mM reduced Glutathione, pH =8.0 in the elution buffer.
Handling Advice:	Aliquot to avoid repeated freezing and thawing.
Storage:	-80 °C
Storage Comment:	Best use within three months from the date of receipt of this protein.

Images



SDS-PAGE

Image 1.