



[Go to Product page](#)

Datasheet for ABIN1786760

## MTERF Protein (AA 1-399) (GST tag)

### 1 Image

#### Overview

Quantity:	10 µg
Target:	MTERF
Protein Characteristics:	AA 1-399
Origin:	Human
Source:	Wheat germ
Protein Type:	Recombinant
Purification tag / Conjugate:	This MTERF protein is labelled with GST tag.
Application:	Western Blotting (WB), ELISA, Affinity Purification (AP), Antibody Array (AA)

#### Product Details

Purpose:	MTERF (Human) Recombinant Protein (P01)
Sequence:	<p>MQSLSLGQTS ISKGLNYLTI MAPGNLWHMR NNFLFGSRCW MTRFSAENIF KSVSFRLFGV KCHNTDSEPL KNEDLLKNLL TMGVDIDMAR KRQPGVFHRM ITNEQDLKMF LLSKGASKEV IASIISRYPR AITRTPENLS KRWDLWRKIV TSDLEIVNIL ERSPESFFRS NNNLNLENNI KFLYSVGLTR KCLCROLLTNA PRTFSNSLDL NKQMVEFLQA AGLSLGHNDP TDFVRKIIFK NPFILIQSTK RVKANIEFLR STFNLNSEEL LVLICGPGAE ILDLSNDYAR RSYANIKEKL FSLGCTEEEV QKFVLSYPDV IFLAEKKFND EIDCLMEENI SISQIENPR VLDSSISTLK SRIKELVNAG CNLSTLNITL LSWSKKRYEA KKKLSRFA</p>
Characteristics:	Human MTERF full-length ORF ( AAH00965, 1 a.a. - 399 a.a.) recombinant protein with GST-tag at N-terminal.
Purification:	in vitro wheat germ expression system

## Target Details

Target:	MTERF
Alternative Name:	MTERF ( <a href="#">MTERF Products</a> )
Background:	Full Gene Name: mitochondrial transcription termination factor Synonyms: MGC131634
Gene ID:	7978

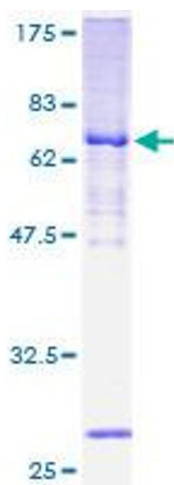
## Application Details

Application Notes:	Optimal working dilution should be determined by the investigator.
Comment:	Preparation method: in vitro, wheat germ expression system Product Quality tested by: 12.5% SDS-PAGE Stained with Coomassie Blue.
Restrictions:	For Research Use only

## Handling

Buffer:	50 mM Tris-HCl, 10 mM reduced Glutathione, pH =8.0 in the elution buffer.
Handling Advice:	Aliquot to avoid repeated freezing and thawing.
Storage:	-80 °C
Storage Comment:	Best use within three months from the date of receipt of this protein.

## Images



### SDS-PAGE

Image 1.