



[Go to Product page](#)

Datasheet for ABIN1787888

DDX18 Protein (AA 571-670) (GST tag)

1 Image

Overview

Quantity:	10 µg
Target:	DDX18
Protein Characteristics:	AA 571-670
Origin:	Human
Source:	Wheat germ
Protein Type:	Recombinant
Purification tag / Conjugate:	This DDX18 protein is labelled with GST tag.
Application:	ELISA, Western Blotting (WB), Antibody Array (AA), Affinity Purification (AP)

Product Details

Purpose:	DDX18 (Human) Recombinant Protein (Q01)
Sequence:	KNYFLHKSAQ EAYKSYIRAY DSHSLKQIFN VNNLNLQPVA LSFQFKVPPF VDLNVNSNEG KQKKRGGGGG FGYQKTKKVE KSKIFKHISK KSSDSRQFSH
Characteristics:	Human DDX18 partial ORF (NP_006764, 571 a.a. - 670 a.a.) recombinant protein with GST-tag at N-terminal.
Purification:	in vitro wheat germ expression system

Target Details

Target:	DDX18
Alternative Name:	DDX18 (DDX18 Products)

Target Details

Background:	Full Gene Name: DEAD (Asp-Glu-Ala-Asp) box polypeptide 18 Synonyms: FLJ33908,MrDb
Gene ID:	8886
NCBI Accession:	NM_006773

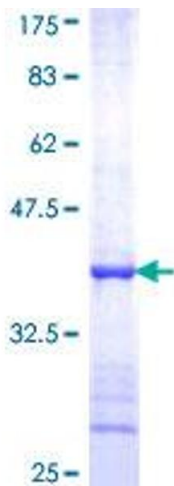
Application Details

Application Notes:	Optimal working dilution should be determined by the investigator.
Comment:	Preparation method: in vitro, wheat germ expression system Product Quality tested by: 12.5% SDS-PAGE Stained with Coomassie Blue.
Restrictions:	For Research Use only

Handling

Buffer:	50 mM Tris-HCl, 10 mM reduced Glutathione, pH =8.0 in the elution buffer.
Handling Advice:	Aliquot to avoid repeated freezing and thawing.
Storage:	-80 °C
Storage Comment:	Best use within three months from the date of receipt of this protein.

Images



SDS-PAGE

Image 1.