



[Go to Product page](#)

Datasheet for ABIN1787993

STBD1 Protein (AA 259-358) (GST tag)

1 Image

Overview

Quantity:	10 µg
Target:	STBD1
Protein Characteristics:	AA 259-358
Origin:	Human
Source:	Wheat germ
Protein Type:	Recombinant
Purification tag / Conjugate:	This STBD1 protein is labelled with GST tag.
Application:	ELISA, Western Blotting (WB), Affinity Purification (AP), Antibody Array (AA)

Product Details

Purpose:	STBD1 (Human) Recombinant Protein (Q02)
Sequence:	AGSQQVSVRF QVHYVTSTDV QFIAVTGDHE CLGRWNTYIP LHYNKDGFWFS HSIFLPADTV VEWKFVLVEN GGVTRWEECS NRFLETGHED KVVHAWWGIH
Characteristics:	Human STBD1 partial ORF (NP_003934.1, 259 a.a. - 358 a.a.) recombinant protein with GST-tag at N-terminal.
Purification:	in vitro wheat germ expression system

Target Details

Target:	STBD1
Alternative Name:	STBD1 (STBD1 Products)

Target Details

Background:	Full Gene Name: starch binding domain 1 Synonyms: FLJ41801,GENEX3414,GENX-3414
Gene ID:	8987
NCBI Accession:	NM_003943

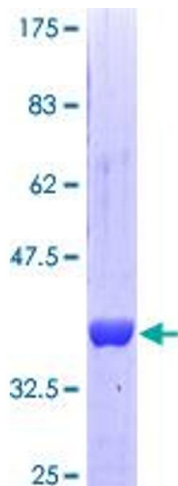
Application Details

Application Notes:	Optimal working dilution should be determined by the investigator.
Comment:	Preparation method: in vitro, wheat germ expression system Product Quality tested by: 12.5% SDS-PAGE Stained with Coomassie Blue.
Restrictions:	For Research Use only

Handling

Buffer:	50 mM Tris-HCl, 10 mM reduced Glutathione, pH =8.0 in the elution buffer.
Handling Advice:	Aliquot to avoid repeated freezing and thawing.
Storage:	-80 °C
Storage Comment:	Best use within three months from the date of receipt of this protein.

Images



SDS-PAGE

Image 1.