



[Go to Product page](#)

Datasheet for ABIN1788076

## SH2D2A Protein (AA 252-351) (GST tag)

### 1 Image

#### Overview

Quantity:	10 µg
Target:	SH2D2A
Protein Characteristics:	AA 252-351
Origin:	Human
Source:	Wheat germ
Protein Type:	Recombinant
Purification tag / Conjugate:	This SH2D2A protein is labelled with GST tag.
Application:	ELISA, Western Blotting (WB), Affinity Purification (AP), Antibody Array (AA)

#### Product Details

Purpose:	SH2D2A (Human) Recombinant Protein (Q01)
Sequence:	KPQLPPEVYT IPVPRHRPAP RPKPSNPIYN EPDEPIAFYA MGRGSPGEAP SNIYVEVEDE GLPATLGHPV LRKSWSRPVP GGQNTGGSQL HSENSVIGQG
Characteristics:	Human SH2D2A partial ORF ( AAH12107, 252 a.a. - 351 a.a.) recombinant protein with GST-tag at N-terminal.
Purification:	in vitro wheat germ expression system

#### Target Details

Target:	SH2D2A
Alternative Name:	SH2D2A ( <a href="#">SH2D2A Products</a> )

## Target Details

Background:	Full Gene Name: SH2 domain protein 2A Synonyms: F2771, TSAd
Gene ID:	9047
Pathways:	<a href="#">Signaling Events mediated by VEGFR1 and VEGFR2, VEGF Signaling</a>

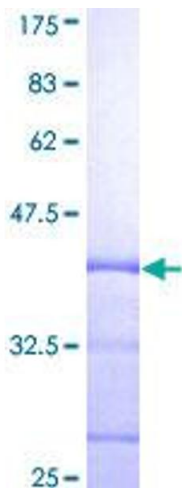
## Application Details

Application Notes:	Optimal working dilution should be determined by the investigator.
Comment:	Preparation method: in vitro, wheat germ expression system Product Quality tested by: 12.5% SDS-PAGE Stained with Coomassie Blue.
Restrictions:	For Research Use only

## Handling

Buffer:	50 mM Tris-HCl, 10 mM reduced Glutathione, pH =8.0 in the elution buffer.
Handling Advice:	Aliquot to avoid repeated freezing and thawing.
Storage:	-80 °C
Storage Comment:	Best use within three months from the date of receipt of this protein.

## Images



### SDS-PAGE

Image 1.