

Datasheet for ABIN1788848  
**GMFG Protein (AA 43-142) (GST tag)**



[Go to Product page](#)

1 Image

Overview

Quantity:	10 µg
Target:	GMFG
Protein Characteristics:	AA 43-142
Origin:	Human
Source:	Wheat germ
Protein Type:	Recombinant
Purification tag / Conjugate:	This GMFG protein is labelled with GST tag.
Application:	Western Blotting (WB), ELISA, Antibody Array (AA), Affinity Purification (AP)

Product Details

Purpose:	GMFG (Human) Recombinant Protein (Q01)
Sequence:	VVLEEEFQNI SPEELKMELP ERQPRFVVYS YKYVHDDGRV SYPLCFIFSS PVGCKPEQQM MYAGSKNRLV QTAELTKVFE IRTTDDLTEA WLQEKLSFFR
Characteristics:	Human GMFG partial ORF ( NP_004868, 43 a.a. - 142 a.a.) recombinant protein with GST-tag at N-terminal.
Purification:	in vitro wheat germ expression system

Target Details

Target:	GMFG
Alternative Name:	GMFG ( <a href="#">GMFG Products</a> )

## Target Details

Background: Full Gene Name: glia maturation factor, gamma  
Synonyms: GMF-GAMMA,MGC126867

Gene ID: 9535

NCBI Accession: [NM\\_004877](#)

## Application Details

Application Notes: Optimal working dilution should be determined by the investigator.

Comment: Preparation method: in vitro, wheat germ expression system  
Product Quality tested by: 12.5% SDS-PAGE Stained with Coomassie Blue.

Restrictions: For Research Use only

## Handling

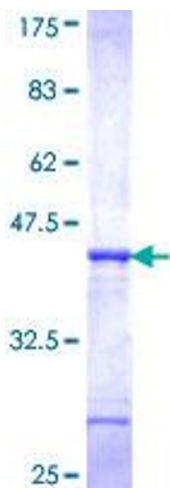
Buffer: 50 mM Tris-HCl, 10 mM reduced Glutathione, pH =8.0 in the elution buffer.

Handling Advice: Aliquot to avoid repeated freezing and thawing.

Storage: -80 °C

Storage Comment: Best use within three months from the date of receipt of this protein.

## Images



### SDS-PAGE

Image 1.