



[Go to Product page](#)

Datasheet for ABIN1788874

## MRPL33 Protein (AA 1-65) (GST tag)

### 1 Image

#### Overview

Quantity:	10 µg
Target:	MRPL33
Protein Characteristics:	AA 1-65
Origin:	Human
Source:	Wheat germ
Protein Type:	Recombinant
Purification tag / Conjugate:	This MRPL33 protein is labelled with GST tag.
Application:	ELISA, Western Blotting (WB), Antibody Array (AA), Affinity Purification (AP)

#### Product Details

Purpose:	MRPL33 (Human) Recombinant Protein (P01)
Sequence:	MFLSAVFFAK SKSKNILVRM VSEAGTGFCF NTKRNRLREK LLLHYDPVV KQRVLFVEKK KIRSL
Characteristics:	Human MRPL33 full-length ORF ( NP_004882.1, 1 a.a. - 65 a.a.) recombinant protein with GST-tag at N-terminal.
Purification:	in vitro wheat germ expression system

#### Target Details

Target:	MRPL33
Alternative Name:	MRPL33 ( <a href="#">MRPL33 Products</a> )
Background:	Full Gene Name: mitochondrial ribosomal protein L33

## Target Details

Synonyms: C2orf1,MGC111093,MGC13694,MGC23922,RPL33L

Gene ID: 9553

NCBI Accession: [NM\\_004891](#)

## Application Details

Application Notes: Optimal working dilution should be determined by the investigator.

Comment: Preparation method: in vitro, wheat germ expression system  
Product Quality tested by: 12.5% SDS-PAGE Stained with Coomassie Blue.

Restrictions: For Research Use only

## Handling

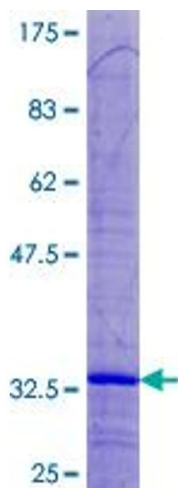
Buffer: 50 mM Tris-HCl, 10 mM reduced Glutathione, pH =8.0 in the elution buffer.

Handling Advice: Aliquot to avoid repeated freezing and thawing.

Storage: -80 °C

Storage Comment: Best use within three months from the date of receipt of this protein.

## Images



### SDS-PAGE

Image 1.