

Datasheet for ABIN1789786

## SLC25A15 Protein (AA 237-301) (GST tag)



[Go to Product page](#)

### 1 Image

#### Overview

Quantity:	10 µg
Target:	SLC25A15
Protein Characteristics:	AA 237-301
Origin:	Human
Source:	Wheat germ
Protein Type:	Recombinant
Purification tag / Conjugate:	This SLC25A15 protein is labelled with GST tag.
Application:	Western Blotting (WB), ELISA, Affinity Purification (AP), Antibody Array (AA)

#### Product Details

Purpose:	SLC25A15 (Human) Recombinant Protein (Q01)
Sequence:	IQVLSMSGKQ AGFIRTFINV VKNEGITALY SGLKPTMIRA FPANGALFLA YEYSRKLMMN QLEAY
Characteristics:	Human SLC25A15 partial ORF ( NP_055067.1, 237 a.a. - 301 a.a.) recombinant protein with GST-tag at N-terminal.
Purification:	in vitro wheat germ expression system

#### Target Details

Target:	SLC25A15
Alternative Name:	SLC25A15 ( <a href="#">SLC25A15 Products</a> )
Background:	Full Gene Name: solute carrier family 25 (mitochondrial carrier, ornithine transporter) member

## Target Details

15  
Synonyms: D13S327,HHH,ORC1,ORNT1

Gene ID: 10166

NCBI Accession: [NM\\_014252](#)

## Application Details

Application Notes: Optimal working dilution should be determined by the investigator.

Comment: Preparation method: in vitro, wheat germ expression system  
Product Quality tested by: 12.5% SDS-PAGE Stained with Coomassie Blue.

Restrictions: For Research Use only

## Handling

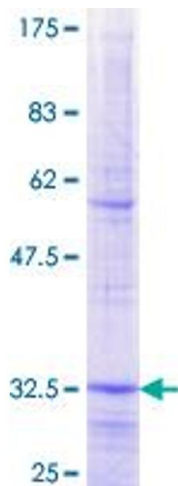
Buffer: 50 mM Tris-HCl, 10 mM reduced Glutathione, pH =8.0 in the elution buffer.

Handling Advice: Aliquot to avoid repeated freezing and thawing.

Storage: -80 °C

Storage Comment: Best use within three months from the date of receipt of this protein.

## Images



### SDS-PAGE

Image 1.