



[Go to Product page](#)

Datasheet for ABIN1789835

DHRS2 Protein (AA 1-300) (GST tag)

1 Image

Overview

Quantity:	10 µg
Target:	DHRS2
Protein Characteristics:	AA 1-300
Origin:	Human
Source:	Wheat germ
Protein Type:	Recombinant
Purification tag / Conjugate:	This DHRS2 protein is labelled with GST tag.
Application:	ELISA, Western Blotting (WB), Antibody Array (AA), Affinity Purification (AP)

Product Details

Purpose:	DHRS2 (Human) Recombinant Protein (P01)
Sequence:	MLSAVARGYQ GWFHPCARLS VRMSSTGIDR KGVLANRVAV VTGSTSGIGF AIARRRLARDG AHVVISSRKQ QNVDRAMAKL QGEGLSVAGI VCHVGKAEDR EQLVAKALEH CGGVDFLVCS AGVNPLVGST LGTSEQIWDK ILSVNVKSPA LLLSQLLPYM ENRRGAVILV SSIAAYNPVW ALGVYNVSKT ALLGLTRTLA LELAPKDIRV NCVVPGIIKT DFSKVVRI GF MGMSLSGR TS RNIISCRGLG SQRTVQESCP SCALQMPATS TGRTL RWQAT PLGSERSGGG CVAVVP GPGA
Characteristics:	Human DHRS2 full-length ORF (AAH02786.1, 1 a.a. - 300 a.a.) recombinant protein with GST-tag at N-terminal.
Purification:	in vitro wheat germ expression system

Target Details

Target:	DHRS2
Alternative Name:	DHRS2 (DHRS2 Products)
Background:	Full Gene Name: dehydrogenase/reductase (SDR family) member 2 Synonyms: HEP27,SDR25C1
Gene ID:	10202
Pathways:	C21-Steroid Hormone Metabolic Process

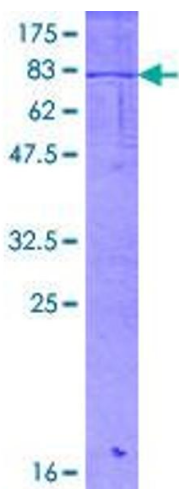
Application Details

Application Notes:	Optimal working dilution should be determined by the investigator.
Comment:	Preparation method: in vitro, wheat germ expression system Product Quality tested by: 12.5% SDS-PAGE Stained with Coomassie Blue.
Restrictions:	For Research Use only

Handling

Buffer:	50 mM Tris-HCl, 10 mM reduced Glutathione, pH =8.0 in the elution buffer.
Handling Advice:	Aliquot to avoid repeated freezing and thawing.
Storage:	-80 °C
Storage Comment:	Best use within three months from the date of receipt of this protein.

Images



SDS-PAGE

Image 1.