



[Go to Product page](#)

Datasheet for ABIN1790107

CCL26 Protein (AA 24-94) (GST tag)

1 Image

Overview

Quantity:	10 µg
Target:	CCL26
Protein Characteristics:	AA 24-94
Origin:	Human
Source:	Wheat germ
Protein Type:	Recombinant
Purification tag / Conjugate:	This CCL26 protein is labelled with GST tag.
Application:	Western Blotting (WB), ELISA, Antibody Array (AA), Affinity Purification (AP)

Product Details

Purpose:	CCL26 (Human) Recombinant Protein (Q01)
Sequence:	TRGSDISKTC CFQYSHKPLP WTWVRSYEFT SNSCSQRAVI FTTKRGKKVC THPRKKWVQK YISLLKTPKQ L
Characteristics:	Human CCL26 partial ORF (NP_006063, 24 a.a. - 94 a.a.) recombinant protein with GST-tag at N-terminal.
Purification:	in vitro wheat germ expression system

Target Details

Target:	CCL26
Alternative Name:	CCL26 (CCL26 Products)

Target Details

Background:	Full Gene Name: chemokine (C-C motif) ligand 26 Synonyms: IMAC,MGC126714,MIP-4a,MIP-4alpha,SCYA26,TSC-1
Gene ID:	10344
NCBI Accession:	NM_006072
Pathways:	Regulation of Actin Filament Polymerization

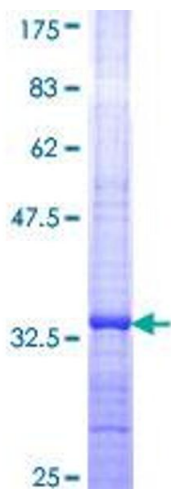
Application Details

Application Notes:	Optimal working dilution should be determined by the investigator.
Comment:	Preparation method: in vitro, wheat germ expression system Product Quality tested by: 12.5% SDS-PAGE Stained with Coomassie Blue.
Restrictions:	For Research Use only

Handling

Buffer:	50 mM Tris-HCl, 10 mM reduced Glutathione, pH =8.0 in the elution buffer.
Handling Advice:	Aliquot to avoid repeated freezing and thawing.
Storage:	-80 °C
Storage Comment:	Best use within three months from the date of receipt of this protein.

Images



SDS-PAGE

Image 1.