



[Go to Product page](#)

Datasheet for ABIN1790188

ST3GAL6 Protein (AA 145-240) (GST tag)

1 Image

Overview

Quantity:	10 µg
Target:	ST3GAL6
Protein Characteristics:	AA 145-240
Origin:	Human
Source:	Wheat germ
Protein Type:	Recombinant
Purification tag / Conjugate:	This ST3GAL6 protein is labelled with GST tag.
Application:	ELISA, Western Blotting (WB), Affinity Purification (AP), Antibody Array (AA)

Product Details

Purpose:	ST3GAL6 (Human) Recombinant Protein (Q01)
Sequence:	MNNGPVLGHE EEVGRRTTFR LFYPESVFSD PIHNDPNTTV ILTAFKPHDL RWLLELLMGD KINTNGFWKK PALNLIYKPY QIRILDPFII RTAAYE
Characteristics:	Human ST3GAL6 partial ORF (NP_006091, 145 a.a. - 240 a.a.) recombinant protein with GST-tag at N-terminal.
Purification:	in vitro wheat germ expression system

Target Details

Target:	ST3GAL6
Alternative Name:	ST3GAL6 (ST3GAL6 Products)

Target Details

Background:	Full Gene Name: ST3 beta-galactoside alpha-2,3-sialyltransferase 6 Synonyms: SIAT10,ST3GALVI
Gene ID:	10402
NCBI Accession:	NM_006100
Pathways:	Glycosaminoglycan Metabolic Process

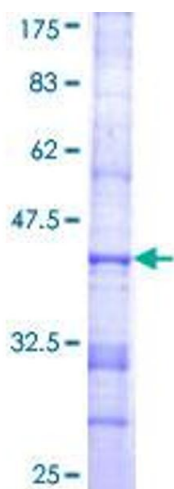
Application Details

Application Notes:	Optimal working dilution should be determined by the investigator.
Comment:	Preparation method: in vitro, wheat germ expression system Product Quality tested by: 12.5% SDS-PAGE Stained with Coomassie Blue.
Restrictions:	For Research Use only

Handling

Buffer:	50 mM Tris-HCl, 10 mM reduced Glutathione, pH =8.0 in the elution buffer.
Handling Advice:	Aliquot to avoid repeated freezing and thawing.
Storage:	-80 °C
Storage Comment:	Best use within three months from the date of receipt of this protein.

Images



SDS-PAGE

Image 1.