



[Go to Product page](#)

Datasheet for ABIN1790279

TOMM40 Protein (AA 276-361) (GST tag)

1 Image

Overview

Quantity:	10 µg
Target:	TOMM40
Protein Characteristics:	AA 276-361
Origin:	Human
Source:	Wheat germ
Protein Type:	Recombinant
Purification tag / Conjugate:	This TOMM40 protein is labelled with GST tag.
Application:	ELISA, Western Blotting (WB), Affinity Purification (AP), Antibody Array (AA)

Product Details

Purpose:	TOMM40 (Human) Recombinant Protein (Q01)
Sequence:	HKASDQLQVG VEFEASTRMQ DTSVSFGYQL DLPKANLLFK GSVDSNWIVG ATLEKKLPPL PLTLALGAFL NHRKNKFQCG FGLTIG
Characteristics:	Human TOMM40 partial ORF (NP_006105, 276 a.a. - 361 a.a.) recombinant protein with GST-tag at N-terminal.
Purification:	in vitro wheat germ expression system

Target Details

Target:	TOMM40
Alternative Name:	TOMM40 (TOMM40 Products)

Target Details

Background:	Full Gene Name: translocase of outer mitochondrial membrane 40 homolog (yeast) Synonyms: C19orf1,D19S1177E,PER-EC1,PEREC1,TOM40
Gene ID:	10452
NCBI Accession:	NM_006114

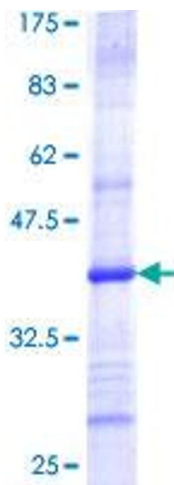
Application Details

Application Notes:	Optimal working dilution should be determined by the investigator.
Comment:	Preparation method: in vitro, wheat germ expression system Product Quality tested by: 12.5% SDS-PAGE Stained with Coomassie Blue.
Restrictions:	For Research Use only

Handling

Buffer:	50 mM Tris-HCl, 10 mM reduced Glutathione, pH =8.0 in the elution buffer.
Handling Advice:	Aliquot to avoid repeated freezing and thawing.
Storage:	-80 °C
Storage Comment:	Best use within three months from the date of receipt of this protein.

Images



SDS-PAGE

Image 1.