

Datasheet for ABIN1790369

Semaphorin 6C Protein (AA 1-930) (GST tag)



[Go to Product page](#)

1 Image

Overview

Quantity:	10 µg
Target:	Semaphorin 6C (SEMA6C)
Protein Characteristics:	AA 1-930
Origin:	Human
Source:	Wheat germ
Protein Type:	Recombinant
Purification tag / Conjugate:	This Semaphorin 6C protein is labelled with GST tag.
Application:	ELISA, Western Blotting (WB), Affinity Purification (AP), Antibody Array (AA)

Product Details

Purpose:	SEMA6C (Human) Recombinant Protein (P01)
Sequence:	<p>MPRAPHF MPL LLLLLLLSLP HTQAAPQDP LPLLISDLQG TSPLSWFRGL EDDAVAAELG LDFQRFLTLN RTLLVAARDH VFSFDLQAE EGEGLVPNKY LTWRSQDVEN CAVRGKLTDE CYNIRVLP WDSQTLLACG TNSFSPVCRS YGITSLQQEG EELSGQARCP FDATAQSNVAI FAEGSLYSAT AADFQASDAV VYRSLGPQPP LRS AKYDSKW LREPHFVQAL EHG D HVYFFF REVSVEDARL GRVQFSRVAR VCKRDMGGSP RALDRHWTSF LKRLNCSVP GDSTFYFDVL QALTGPVNLH GRSALFGVFT TQTNSIPGSA VCAFYLDEIE RGFEGKFKEQ RSLDGAWTPV SEDRVPSRP GSCAGVGGAA LFSSRDLPD DVLTFIKAHP LLDPAVPPVT HQPLLTLSR ALLTQVAVDG MAGPHSNITV MFLGSNDGTV LKVLTPGGRS GGPEPILLEE IDAYSPARCS GKRTAQ TARR IIGLELDTEG HRLFVAFSGC IVYLP LSRCA RHGACQRSCL ASQDPYCGWH SSRGCVDIRG SGGTDVDQAG NQESMEHGDC QDGATGSQSG PGDSAYGVRR DLPPASASRS VPIPLLLASV AAALFALGASV SGLLVSCACR RAHRRRGKDI ETPGLRPLS LRSLARLHGG</p>

Product Details

GPEPPPPSKD GDAVQTPQLY TTFLPPPEGV PPELACLPT PESTPELPVK HLRAAGDPWE
WNQNRNNAKE GPGRSRGGHA AGGPAPRVLV RPPPPGCPGQ AVEVTTLEEL LRYLHGPQPP
RKGAEPPAPL TSRALPPEPA PALLGGPSPR PHECASPLRL DVPPEGRCAS APARPALSAP
APRLGVGGGR RLPFSGHRAP PALLTRVPSG GPSRYSGGPG KHLLYLGRPE GYRGRALKRV
DVEKPQLSLK PPLVGPSSRQ AVPNGGRFNF

Characteristics: Human SEMA6C full-length ORF (NP_112175.2, 1 a.a. - 930 a.a.) recombinant protein with GST-tag at N-terminal.

Purification: in vitro wheat germ expression system

Target Details

Target: Semaphorin 6C (SEMA6C)

Alternative Name: SEMA6C ([SEMA6C Products](#))

Background: Full Gene Name: sema domain, transmembrane domain (TM), and cytoplasmic domain, (semaphorin) 6C

Synonyms: SEMAY,m-SemaY,m-SemaY2

Gene ID: 10500

NCBI Accession: [NM_030913](#)

Application Details

Application Notes: Optimal working dilution should be determined by the investigator.

Comment: Preparation method: in vitro, wheat germ expression system
Product Quality tested by: 12.5% SDS-PAGE Stained with Coomassie Blue.

Restrictions: For Research Use only

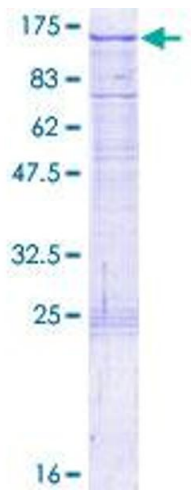
Handling

Buffer: 50 mM Tris-HCl, 10 mM reduced Glutathione, pH =8.0 in the elution buffer.

Handling Advice: Aliquot to avoid repeated freezing and thawing.

Storage: -80 °C

Storage Comment: Best use within three months from the date of receipt of this protein.



SDS-PAGE

Image 1.