



[Go to Product page](#)

Datasheet for ABIN1792050

HIC2 Protein (AA 1-100) (GST tag)

1 Image

Overview

Quantity:	10 µg
Target:	HIC2
Protein Characteristics:	AA 1-100
Origin:	Human
Source:	Wheat germ
Protein Type:	Recombinant
Purification tag / Conjugate:	This HIC2 protein is labelled with GST tag.
Application:	ELISA, Western Blotting (WB), Affinity Purification (AP), Antibody Array (AA)

Product Details

Purpose:	HIC2 (Human) Recombinant Protein (Q01)
Sequence:	MVSGPLALRW CAWAGRGDMG PDMELPSHSK QLLLQLNQQR TKGFLCDVII MVENSIFRAH KNVLAASSIY FKSLVLHDNL INLDTDMVSS TVFQQILDFI
Characteristics:	Human HIC2 partial ORF (NP_055909, 1 a.a. - 100 a.a.) recombinant protein with GST-tag at N-terminal.
Purification:	in vitro wheat germ expression system

Target Details

Target:	HIC2
Alternative Name:	HIC2 (HIC2 Products)

Target Details

Background: Full Gene Name: hypermethylated in cancer 2
Synonyms: HRG22,KIAA1020,ZBTB30

Gene ID: 23119

NCBI Accession: [NM_015094](#)

Application Details

Application Notes: Optimal working dilution should be determined by the investigator.

Comment: Preparation method: in vitro, wheat germ expression system
Product Quality tested by: 12.5% SDS-PAGE Stained with Coomassie Blue.

Restrictions: For Research Use only

Handling

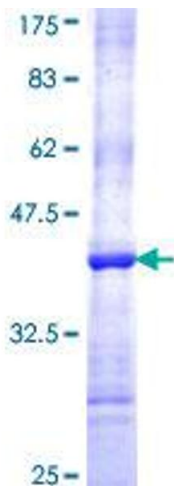
Buffer: 50 mM Tris-HCl, 10 mM reduced Glutathione, pH =8.0 in the elution buffer.

Handling Advice: Aliquot to avoid repeated freezing and thawing.

Storage: -80 °C

Storage Comment: Best use within three months from the date of receipt of this protein.

Images



SDS-PAGE

Image 1.