

Datasheet for ABIN1792909  
**SIN3A Protein (AA 1-156) (GST tag)**



[Go to Product page](#)

1 Image

Overview

Quantity:	10 µg
Target:	SIN3A
Protein Characteristics:	AA 1-156
Origin:	Human
Source:	Wheat germ
Protein Type:	Recombinant
Purification tag / Conjugate:	This SIN3A protein is labelled with GST tag.
Application:	ELISA, Western Blotting (WB), Affinity Purification (AP), Antibody Array (AA)

Product Details

Purpose:	SIN3A (Human) Recombinant Protein (P01)
Sequence:	MKRRLDDQES PVYAAQRRRI PGSTEAFPHQ HRVLAPAPPV YEAVSETMQS ATGIQYSVTP SYQVSAMPQS SGSHGPAIAA VHSSHHHPTA VQPHGGQVVQ SHAHPAPPVA PVQGQQQFQR LKVVFFSSFSW VKKFIFSRKY WLQLVGC GGT TSNLRY
Characteristics:	Human SIN3A full-length ORF ( AAH66364.1, 1 a.a. - 156 a.a.) recombinant protein with GST-tag at N-terminal.
Purification:	in vitro wheat germ expression system

Target Details

Target:	SIN3A
Alternative Name:	SIN3A ( <a href="#">SIN3A Products</a> )

## Target Details

Background:	Full Gene Name: SIN3 homolog A, transcription regulator (yeast) Synonyms: DKFZp434K2235,FLJ90319,KIAA0700
Gene ID:	25942
Pathways:	<a href="#">Activation of Innate immune Response</a> , <a href="#">Carbohydrate Homeostasis</a> , <a href="#">Chromatin Binding</a> , <a href="#">Regulation of Lipid Metabolism by PPARalpha</a>

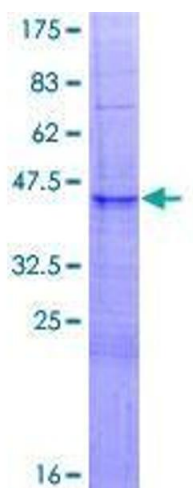
## Application Details

Application Notes:	Optimal working dilution should be determined by the investigator.
Comment:	Preparation method: in vitro, wheat germ expression system Product Quality tested by: 12.5% SDS-PAGE Stained with Coomassie Blue.
Restrictions:	For Research Use only

## Handling

Buffer:	50 mM Tris-HCl, 10 mM reduced Glutathione, pH =8.0 in the elution buffer.
Handling Advice:	Aliquot to avoid repeated freezing and thawing.
Storage:	-80 °C
Storage Comment:	Best use within three months from the date of receipt of this protein.

## Images



### SDS-PAGE

Image 1.