



[Go to Product page](#)

Datasheet for ABIN1793242

## GBGT1 Protein (AA 248-347) (GST tag)

### 1 Image

#### Overview

Quantity:	10 µg
Target:	GBGT1
Protein Characteristics:	AA 248-347
Origin:	Human
Source:	Wheat germ
Protein Type:	Recombinant
Purification tag / Conjugate:	This GBGT1 protein is labelled with GST tag.
Application:	ELISA, Western Blotting (WB), Antibody Array (AA), Affinity Purification (AP)

#### Product Details

Purpose:	GBGT1 (Human) Recombinant Protein (Q01)
Sequence:	TAFVADSEGD FYYGGAVFGG QVARVYEFTR GCHMAILADK ANGIMAAWRE ESHLNRHFIS NKPSKVLSPY YLWDDRKPQP PSLKLIRFST LDKDISCLRS
Characteristics:	Human GBGT1 partial ORF ( NP_068836, 248 a.a. - 347 a.a.) recombinant protein with GST-tag at N-terminal.
Purification:	in vitro wheat germ expression system

#### Target Details

Target:	GBGT1
Alternative Name:	GBGT1 ( <a href="#">GBGT1 Products</a> )

## Target Details

Background:	Full Gene Name: globoside alpha-1,3-N-acetylgalactosaminyltransferase 1 Synonyms: A3GALNT,FS,MGC44848,UNQ2513
Gene ID:	26301
NCBI Accession:	<a href="#">NM_021996</a>

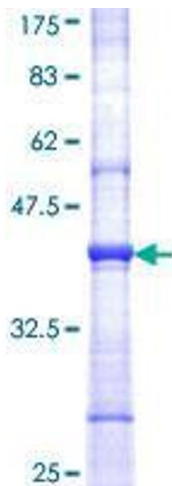
## Application Details

Application Notes:	Optimal working dilution should be determined by the investigator.
Comment:	Preparation method: in vitro, wheat germ expression system Product Quality tested by: 12.5% SDS-PAGE Stained with Coomassie Blue.
Restrictions:	For Research Use only

## Handling

Buffer:	50 mM Tris-HCl, 10 mM reduced Glutathione, pH =8.0 in the elution buffer.
Handling Advice:	Aliquot to avoid repeated freezing and thawing.
Storage:	-80 °C
Storage Comment:	Best use within three months from the date of receipt of this protein.

## Images



### SDS-PAGE

Image 1.