

Datasheet for ABIN1793341

GREM1 Protein (AA 75-184) (GST tag)



[Go to Product page](#)

1 Image

Overview

Quantity:	10 µg
Target:	GREM1
Protein Characteristics:	AA 75-184
Origin:	Human
Source:	Wheat germ
Protein Type:	Recombinant
Purification tag / Conjugate:	This GREM1 protein is labelled with GST tag.
Application:	Western Blotting (WB), ELISA, Antibody Array (AA), Affinity Purification (AP)

Product Details

Purpose:	GREM1 (Human) Recombinant Protein (Q01)
Sequence:	ESSQEALHVT ERKYLKRDWC KTQPLKQTIH EEGNSRTII NRFCYGQCNS FYIPRHIRKE EGSFQSCSFC KPKKFTTMMV TLNCPQLQPP TKKKRVTRVK QCRCISIDL
Characteristics:	Human GREM1 partial ORF (NP_037504, 75 a.a. - 184 a.a.) recombinant protein with GST-tag at N-terminal.
Purification:	in vitro wheat germ expression system

Target Details

Target:	GREM1
Alternative Name:	GREM1 (GREM1 Products)

Target Details

Background:	Full Gene Name: gremlin 1, cysteine knot superfamily, homolog (<i>Xenopus laevis</i>) Synonyms: CKTSF1B1,DAND2,DRM,GREMLIN,IHG-2,MGC126660,PIG2
Gene ID:	26585
NCBI Accession:	NM_013372
Pathways:	Regulation of Muscle Cell Differentiation , Tube Formation , Maintenance of Protein Location

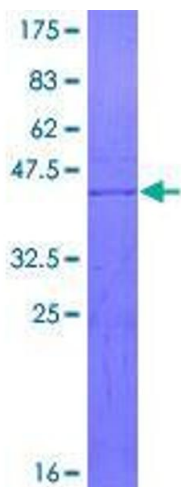
Application Details

Application Notes:	Optimal working dilution should be determined by the investigator.
Comment:	Preparation method: in vitro, wheat germ expression system Product Quality tested by: 12.5% SDS-PAGE Stained with Coomassie Blue.
Restrictions:	For Research Use only

Handling

Buffer:	50 mM Tris-HCl, 10 mM reduced Glutathione, pH =8.0 in the elution buffer.
Handling Advice:	Aliquot to avoid repeated freezing and thawing.
Storage:	-80 °C
Storage Comment:	Best use within three months from the date of receipt of this protein.

Images



SDS-PAGE

Image 1.