

Datasheet for ABIN1794275

TAS2R14 Protein (AA 151-260) (GST tag)[Go to Product page](#)**1** Image

Overview

Quantity:	10 µg
Target:	TAS2R14
Protein Characteristics:	AA 151-260
Origin:	Human
Source:	Wheat germ
Protein Type:	Recombinant
Purification tag / Conjugate:	This TAS2R14 protein is labelled with GST tag.
Application:	ELISA, Western Blotting (WB), Affinity Purification (AP), Antibody Array (AA)

Product Details

Purpose:	TAS2R14 (Human) Recombinant Protein (Q01)
Sequence:	HINASINGYR RNKTCSSDSS NFTRFSSLIV LTSTVFIFIP FTLSLAMFLL LIFSMWKHRK KMQHTVKISG DASTKAHRGV KSVITFFLLY AIFSLSFFIS VWTSERLEEN
Characteristics:	Human TAS2R14 partial ORF (NP_076411, 151 a.a. - 260 a.a.) recombinant protein with GST-tag at N-terminal.
Purification:	in vitro wheat germ expression system

Target Details

Target:	TAS2R14
Alternative Name:	TAS2R14 (TAS2R14 Products)

Target Details

Background:	Full Gene Name: taste receptor, type 2, member 14 Synonyms: MGC125491,MGC125492,T2R14,TRB1
Gene ID:	50840
NCBI Accession:	NM_023922

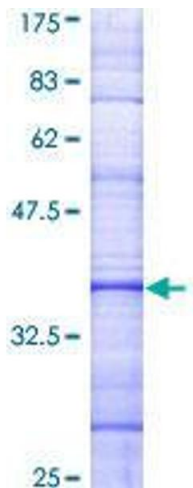
Application Details

Application Notes:	Optimal working dilution should be determined by the investigator.
Comment:	Preparation method: in vitro, wheat germ expression system Product Quality tested by: 12.5% SDS-PAGE Stained with Coomassie Blue.
Restrictions:	For Research Use only

Handling

Buffer:	50 mM Tris-HCl, 10 mM reduced Glutathione, pH =8.0 in the elution buffer.
Handling Advice:	Aliquot to avoid repeated freezing and thawing.
Storage:	-80 °C
Storage Comment:	Best use within three months from the date of receipt of this protein.

Images



SDS-PAGE

Image 1.