



[Go to Product page](#)

Datasheet for ABIN1795472

Cyclin J Protein (CCNJ) (AA 1-372) (GST tag)

1 Image

Overview

Quantity:	10 µg
Target:	Cyclin J (CCNJ)
Protein Characteristics:	AA 1-372
Origin:	Human
Source:	Wheat germ
Protein Type:	Recombinant
Purification tag / Conjugate:	This Cyclin J protein is labelled with GST tag.
Application:	ELISA, Western Blotting (WB), Affinity Purification (AP), Antibody Array (AA)

Product Details

Purpose:	CCNJ (Human) Recombinant Protein (P01)
Sequence:	MELEGQWWRG QLAADIHQAL RYKELKLPSY KGQSPQLSLR RYFADLIAIV SNRFTLCPSA RHLAVYLLDL FMDRYDISIQ QLHLVALSCL LLASKFEEKE DSVPKLEQLN SLGCMTNMNL VLTKQNLLHM ELLLLLTFQW NLCLPTAAHF IEYLLSEAVH ETDLHDGWPM ICLEKTKLYM AKYADYFLEV SLQVAAACVA SSRIILRLSP TWPTRLHRLT AYSWDFLVQC IERLLIAHDN DVKEANKQRG QAGPQSAQLS VFQTASQPSR PVHFQQPQYL HQTHQTSQY RHPTSEQPSC QQIVSTTHTS SYTLQTCFAG FQTSVQGLGH MQTGVGMSLA IPVEVKPCLS VSYNRSYQIN EHYPCITPCF ER
Characteristics:	Human CCNJ full-length ORF (AAH43175, 1 a.a. - 372 a.a.) recombinant protein with GST-tag at N-terminal.
Purification:	in vitro wheat germ expression system

Target Details

Target:	Cyclin J (CCNJ)
Alternative Name:	CCNJ (CCNJ Products)
Background:	Full Gene Name: cyclin J Synonyms: bA690P14.1
Gene ID:	54619

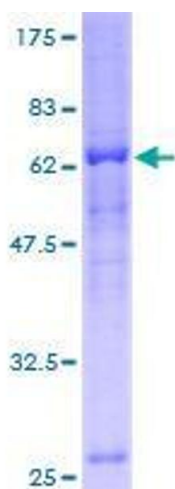
Application Details

Application Notes:	Optimal working dilution should be determined by the investigator.
Comment:	Preparation method: in vitro, wheat germ expression system Product Quality tested by: 12.5% SDS-PAGE Stained with Coomassie Blue.
Restrictions:	For Research Use only

Handling

Buffer:	50 mM Tris-HCl, 10 mM reduced Glutathione, pH =8.0 in the elution buffer.
Handling Advice:	Aliquot to avoid repeated freezing and thawing.
Storage:	-80 °C
Storage Comment:	Best use within three months from the date of receipt of this protein.

Images



SDS-PAGE

Image 1.