

Datasheet for ABIN179723

anti-CCR4 antibody

6 Images

[Go to Product page](#)

Overview

Quantity:	100 µg
Target:	CCR4
Reactivity:	Human
Host:	Mouse
Clonality:	Monoclonal
Conjugate:	This CCR4 antibody is un-conjugated
Application:	Flow Cytometry (FACS), Cell-ELISA (cELISA)

Product Details

Immunogen:	immunisation with human CCR4 peptide
Clone:	KH-4F5
Isotype:	IgG2a
Specificity:	Anti-human CCR4
Purification:	Protein G

Target Details

Target:	CCR4
Alternative Name:	CCR4 (CCR4 Products)
Background:	CCR4 (CC chemokine receptor 4) molecule belongs to the rhodopsin family of G-protein-coupled receptors. Chemokine receptors are membrane bound molecules composed of 7-

Target Details

transmembrane domains and coupled to G-proteins. CCR4 binds the chemokines CCL17 (TARC) and CCL22 (MDC) and is highly expressed in most single-positive CD4(+) thymocytes especially in TH2- and regulatory T-cells. It plays a central role in T cell migration to the thymus, T cell maturation and education. CCR4 is often up-regulated in inflammation and cause conformational changes that trigger intracellular signaling pathways.

UniProt: [P51679](#)

Application Details

Application Notes: Flow cytometry: 1.2 µg/10⁶ cells
Immunofluorescence: 1 µg/10⁶ cells
CELISA: 1:200 - 1:400
For each application a titration should be performed to determine the optimal concentration.

Comment: Synonyms: CC chemokine receptor 4

Restrictions: For Research Use only

Handling

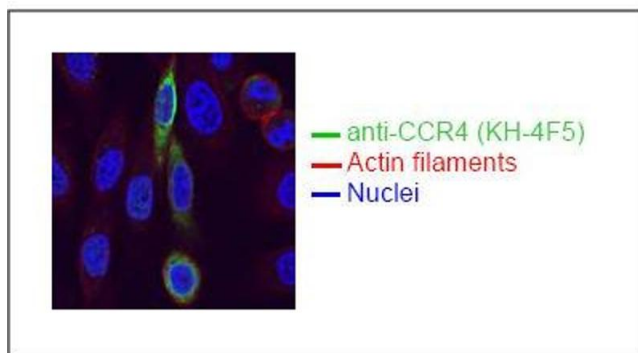
Concentration: 2 mg/mL

Buffer: PBS, pH 7.2

Handling Advice: Avoid repeated freezing and thawing.

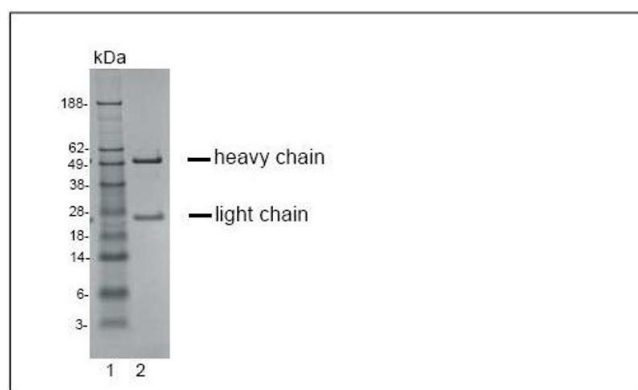
Storage: 4 °C

Storage Comment: short term: 2 °C - 8 °C, long term: -20 °C



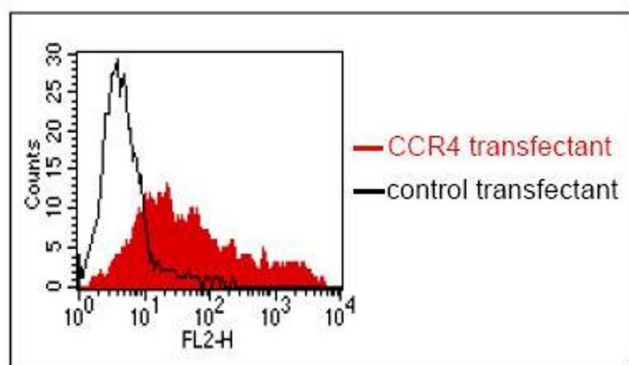
Immunofluorescence

Image 1. Spectral Confocal Microscopy of CHO cells using KH-4F5. CHO cells were transiently transfected with an expression vector encoding CCR4. Binding of KH-4F5 was visualized with a FITC-conjugated secondary antibody (green). Actin filaments are labeled with A



Western Blotting

Image 2. SDS-PAGE analysis of purified KH-4F5 monoclonal antibody. Lane 1: molecular weight marker, Lane 2: 2 ug of purified KH-4F5 antibody. Proteins were separated by SDS-PAGE and stained with RAPID Stain Reagent.



Flow Cytometry

Image 3. FACS analysis of BOSC23 cells using KH-4F5. BOSC23 cells were transiently transfected with an expression vector encoding either CCR4 (red curve) or an irrelevant protein (control transfectant). Binding of KH-4F5 was detected with a PE conjugated secondary antibody. A positive signal was obtained only with CCR4 transfected cells.

Please check the [product details page](#) for more images. Overall 6 images are available for ABIN179723.