



[Go to Product page](#)

Datasheet for ABIN1797477

ANKRD36B Protein (AA 1-239) (GST tag)

1 Image

Overview

Quantity:	10 µg
Target:	ANKRD36B
Protein Characteristics:	AA 1-239
Origin:	Human
Source:	Wheat germ
Protein Type:	Recombinant
Purification tag / Conjugate:	This ANKRD36B protein is labelled with GST tag.
Application:	ELISA, Western Blotting (WB), Antibody Array (AA), Affinity Purification (AP)

Product Details

Purpose:	ANKRD36B (Human) Recombinant Protein (P01)
Sequence:	MERLCSDGFA FPHYIYKPYH LKRIHRAVLR GNLEKLYLL LTYDANKRD RKERTALHLA CATGQPEMVH LLVSRRCEN LCDREDRTPL IKAVQLRQEA CATLLLQNGA DPNITDVFGR TALHYAVYNE DTSMIEKLLS HGTNIEECSK NEYQPLLLAV SRRKVKMVEF LLKKKANVNA IDYLGSRALI LAVTLGEKDI VILLQHNID VFSRDVYGKL AEDYASEAEN RVVSSETTS
Characteristics:	Human ANKRD36B full-length ORF (AAH71771.1, 1 a.a. - 239 a.a.) recombinant protein with GST-tag at N-terminal.
Purification:	in vitro wheat germ expression system

Target Details

Target:	ANKRD36B
---------	----------

Target Details

Alternative Name:	ANKRD36B (ANKRD36B Products)
Background:	Full Gene Name: ankyrin repeat domain 36B Synonyms: FLJ21281,FLJ90089,KIAA1641,MGC149864,MGC149865,MGC167812
Gene ID:	57730

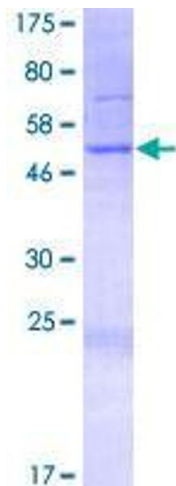
Application Details

Application Notes:	Optimal working dilution should be determined by the investigator.
Comment:	Preparation method: in vitro, wheat germ expression system Product Quality tested by: 12.5% SDS-PAGE Stained with Coomassie Blue.
Restrictions:	For Research Use only

Handling

Buffer:	50 mM Tris-HCl, 10 mM reduced Glutathione, pH =8.0 in the elution buffer.
Handling Advice:	Aliquot to avoid repeated freezing and thawing.
Storage:	-80 °C
Storage Comment:	Best use within three months from the date of receipt of this protein.

Images



SDS-PAGE

Image 1.