



[Go to Product page](#)

Datasheet for ABIN1797611

IL-21 Protein (AA 1-162) (GST tag)

1 Image

Overview

Quantity:	10 µg
Target:	IL-21 (IL21)
Protein Characteristics:	AA 1-162
Origin:	Human
Source:	Wheat germ
Protein Type:	Recombinant
Purification tag / Conjugate:	This IL-21 protein is labelled with GST tag.
Application:	Western Blotting (WB), ELISA, Affinity Purification (AP), Antibody Array (AA)

Product Details

Purpose:	IL21 (Human) Recombinant Protein (P01)
Sequence:	MRSSPGNMER IVICLMVIFL GTLVHKSSSQ GQDRHMIRMR QLIDIVDQLK NYVNDLVPEF LPAPEDVETN CEWSAFSCFQ KAQLKSANTG NNERIINVSI KKLKRKPPST NAGRRQKHRL TCPSCDSYEK KPPKEFLERF KSLQKMIHQ HLSSRTHGSE DS
Characteristics:	Human IL21 full-length ORF (NP_068575.1, 1 a.a. - 162 a.a.) recombinant protein with GST-tag at N-terminal.
Purification:	in vitro wheat germ expression system

Target Details

Target:	IL-21 (IL21)
Alternative Name:	IL21 (IL21 Products)

Target Details

Background:	Full Gene Name: interleukin 21 Synonyms: IL-21,Za11
Gene ID:	59067
NCBI Accession:	NM_021803
Pathways:	JAK-STAT Signaling , Regulation of Leukocyte Mediated Immunity , Positive Regulation of Immune Effector Process , Production of Molecular Mediator of Immune Response

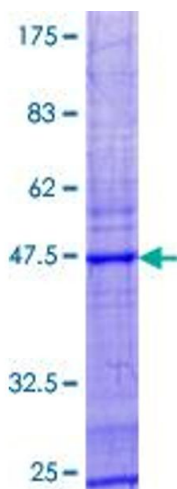
Application Details

Application Notes:	Optimal working dilution should be determined by the investigator.
Comment:	Preparation method: in vitro, wheat germ expression system Product Quality tested by: 12.5% SDS-PAGE Stained with Coomassie Blue.
Restrictions:	For Research Use only

Handling

Buffer:	50 mM Tris-HCl, 10 mM reduced Glutathione, pH =8.0 in the elution buffer.
Handling Advice:	Aliquot to avoid repeated freezing and thawing.
Storage:	-80 °C
Storage Comment:	Best use within three months from the date of receipt of this protein.

Images



SDS-PAGE

Image 1.