



Datasheet for ABIN1798377

MAPKAP1 Protein (AA 51-160) (GST tag)



[Go to Product page](#)

1 Image

Overview

Quantity:	10 µg
Target:	MAPKAP1
Protein Characteristics:	AA 51-160
Origin:	Human
Source:	Wheat germ
Protein Type:	Recombinant
Purification tag / Conjugate:	This MAPKAP1 protein is labelled with GST tag.
Application:	Western Blotting (WB), ELISA, Affinity Purification (AP), Antibody Array (AA)

Product Details

Purpose:	MAPKAP1 (Human) Recombinant Protein (Q01)
Sequence:	GSEIQGSNGE TQGYVYAQSV DITSSWDFGI RRRSNTAQRL ERLRKERQNQ IKCKNIQWKE RNSKQSAQEL KSLFEKKSLK EKPPISGKQS ILSVRLEQCP LQLNPFNEY
Characteristics:	Human MAPKAP1 partial ORF (NP_001006619, 51 a.a. - 160 a.a.) recombinant protein with GST-tag at N-terminal.
Purification:	in vitro wheat germ expression system

Target Details

Target:	MAPKAP1
Alternative Name:	MAPKAP1 (MAPKAP1 Products)

Target Details

Background:	Full Gene Name: mitogen-activated protein kinase associated protein 1 Synonyms: JC310,MGC2745,MIP1,SIN1,SIN1b,SIN1g
Gene ID:	79109
NCBI Accession:	NM_001006618
Pathways:	PI3K-Akt Signaling , Fc-epsilon Receptor Signaling Pathway , Neurotrophin Signaling Pathway , Skeletal Muscle Fiber Development , CXCR4-mediated Signaling Events

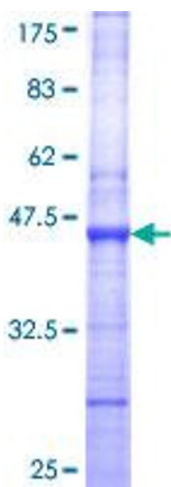
Application Details

Application Notes:	Optimal working dilution should be determined by the investigator.
Comment:	Preparation method: in vitro, wheat germ expression system Product Quality tested by: 12.5% SDS-PAGE Stained with Coomassie Blue.
Restrictions:	For Research Use only

Handling

Buffer:	50 mM Tris-HCl, 10 mM reduced Glutathione, pH =8.0 in the elution buffer.
Handling Advice:	Aliquot to avoid repeated freezing and thawing.
Storage:	-80 °C
Storage Comment:	Best use within three months from the date of receipt of this protein.

Images



SDS-PAGE

Image 1.