



[Go to Product page](#)

Datasheet for ABIN1798543

## NEIL1 Protein (AA 302-390) (GST tag)

### 1 Image

#### Overview

Quantity:	10 µg
Target:	NEIL1
Protein Characteristics:	AA 302-390
Origin:	Human
Source:	Wheat germ
Protein Type:	Recombinant
Purification tag / Conjugate:	This NEIL1 protein is labelled with GST tag.
Application:	Western Blotting (WB), ELISA, Affinity Purification (AP), Antibody Array (AA)

#### Product Details

Purpose:	NEIL1 (Human) Recombinant Protein (Q01)
Sequence:	ATQLSPEDRV EDALPPSKAP SRTRRAKRD L PKRTATQRPE GTSLQQDPEA PTVPKKGRRK GRQAASGHCR PRKVKADIPS LEPEGTSAS
Characteristics:	Human NEIL1 partial ORF ( NP_078884.1, 302 a.a. - 390 a.a.) recombinant protein with GST-tag at N-terminal.
Purification:	in vitro wheat germ expression system

#### Target Details

Target:	NEIL1
Alternative Name:	NEIL1 ( <a href="#">NEIL1 Products</a> )

## Target Details

Background: Full Gene Name: nei endonuclease VIII-like 1 (E. coli)  
Synonyms: FLJ22402,FPG1,NEI1,hFPG1

Gene ID: 79661

NCBI Accession: [NM\\_024608](#)

Pathways: [DNA Damage Repair](#)

## Application Details

Application Notes: Optimal working dilution should be determined by the investigator.

Comment: Preparation method: in vitro, wheat germ expression system  
Product Quality tested by: 12.5% SDS-PAGE Stained with Coomassie Blue.

Restrictions: For Research Use only

## Handling

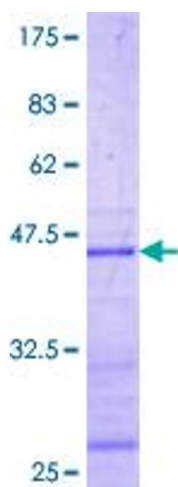
Buffer: 50 mM Tris-HCl, 10 mM reduced Glutathione, pH =8.0 in the elution buffer.

Handling Advice: Aliquot to avoid repeated freezing and thawing.

Storage: -80 °C

Storage Comment: Best use within three months from the date of receipt of this protein.

## Images



### SDS-PAGE

Image 1.