

Datasheet for ABIN1798565

**GAL3ST4 Protein (AA 1-486) (GST tag)**[Go to Product page](#)**1** Image

## Overview

Quantity:	10 µg
Target:	GAL3ST4
Protein Characteristics:	AA 1-486
Origin:	Human
Source:	Wheat germ
Protein Type:	Recombinant
Purification tag / Conjugate:	This GAL3ST4 protein is labelled with GST tag.
Application:	ELISA, Western Blotting (WB), Antibody Array (AA), Affinity Purification (AP)

## Product Details

Purpose:	GAL3ST4 (Human) Recombinant Protein (P01)
Sequence:	MGPLSPARTL RLWGPRSLGV ALGVFMTIGF ALQLLGGPFQ RRLPGLQLRQ PSAPSLRPAL PSCPPRQLRV FLKTHKSGSS SVLSLLHRYG DQHGLRFALP ARYQFGYPKL FQASRVKGYR PQGGGTQLPF HILCHHMRFN LKEVLQVMPS DSFFFSIVRD PAALARSAFS YYKSTSSAFR KSPSLAAFLA NPRGFYRPGA RGDHYARNLL WFDFGLPFPP EKRAKRGNIH PPRDPNPPQL QVLPSGAGPR AQTLNPNALI HPVSTVTDHR SQISSPASFD LGSSSFIQWG LAWLDSVFDL VMVAEYFDES LVLLADALCW GLDDVVGFMH NAQAGHKQGL STVSNSGLTA EDRQLTARAR AWNLDWALY VHFNRSLWAR IEKYQGRLQ TAVAE LRARR EALAKHCLVG GEASDPKYIT DRRFRPFQFG SAKVLGYILR SGLSPQDQEE CERLATPELQ YKDKLDVKQF PPTVSLPLKT SRPLSP
Characteristics:	Human GAL3ST4 full-length ORF ( AAH12976.1, 1 a.a. - 486 a.a.) recombinant protein with GST-tag at N-terminal.

## Product Details

---

Purification: in vitro wheat germ expression system

## Target Details

---

Target: GAL3ST4

Alternative Name: GAL3ST4 ([GAL3ST4 Products](#))

Background: Full Gene Name: galactose-3-O-sulfotransferase 4  
Synonyms: FLJ12116,GAL3ST-4

Gene ID: 79690

## Application Details

---

Application Notes: Optimal working dilution should be determined by the investigator.

Comment: Preparation method: in vitro, wheat germ expression system  
Product Quality tested by: 12.5% SDS-PAGE Stained with Coomassie Blue.

Restrictions: For Research Use only

## Handling

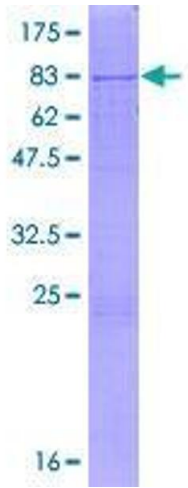
---

Buffer: 50 mM Tris-HCl, 10 mM reduced Glutathione, pH =8.0 in the elution buffer.

Handling Advice: Aliquot to avoid repeated freezing and thawing.

Storage: -80 °C

Storage Comment: Best use within three months from the date of receipt of this protein.



### SDS-PAGE

Image 1.