



[Go to Product page](#)

Datasheet for ABIN1799976

## SPRYD3 Protein (AA 1-100) (GST tag)

### 1 Image

#### Overview

|                               |   |
|-------------------------------|---|
| Quantity:                     | 10 µg   |
| Target:                       | SPRYD3  |
| Protein Characteristics:      | AA 1-100  |
| Origin:                       | Human   |
| Source:                       | Wheat germ  |
| Protein Type:                 | Recombinant   |
| Purification tag / Conjugate: | This SPRYD3 protein is labelled with GST tag.                                 |
| Application:                  | ELISA, Western Blotting (WB), Affinity Purification (AP), Antibody Array (AA) |

#### Product Details

|                  |   |
|------------------|---|
| Purpose:         | FLJ14800 (Human) Recombinant Protein (Q01)  |
| Sequence:        | MRRTRRPRFV LMNKMDDLNL HYRFLNWRRR IREIREVRAF RYQERFKHIL VDGD TLSYHG<br>NSGEVGCYVA SRPLTKDSNY FEVSIVDSGV RGTIAVGLVP |
| Characteristics: | Human FLJ14800 partial ORF ( NP_116229, 1 a.a. - 100 a.a.) recombinant protein with GST-tag at N-terminal.        |
| Purification:    | in vitro wheat germ expression system   |

#### Target Details

|                   |  |
|-------------------|--|
| Target:           | SPRYD3                                     |
| Alternative Name: | SPRYD3 ( <a href="#">SPRYD3 Products</a> ) |

## Target Details

Background: Full Gene Name: SPRY domain containing 3  
Synonyms: FLJ14800

Gene ID: 84926

NCBI Accession: [NM\\_032840](#)

## Application Details

Application Notes: Optimal working dilution should be determined by the investigator.

Comment: Preparation method: in vitro, wheat germ expression system  
Product Quality tested by: 12.5% SDS-PAGE Stained with Coomassie Blue.

Restrictions: For Research Use only

## Handling

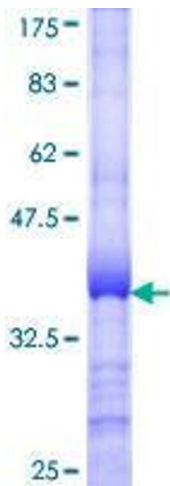
Buffer: 50 mM Tris-HCl, 10 mM reduced Glutathione, pH =8.0 in the elution buffer.

Handling Advice: Aliquot to avoid repeated freezing and thawing.

Storage: -80 °C

Storage Comment: Best use within three months from the date of receipt of this protein.

## Images



### SDS-PAGE

Image 1.