



[Go to Product page](#)

Datasheet for ABIN1800588

ORMDL3 Protein (AA 1-153) (GST tag)

1 Image

Overview

Quantity:	10 µg
Target:	ORMDL3
Protein Characteristics:	AA 1-153
Origin:	Human
Source:	Wheat germ
Protein Type:	Recombinant
Purification tag / Conjugate:	This ORMDL3 protein is labelled with GST tag.
Application:	Western Blotting (WB), ELISA, Antibody Array (AA), Affinity Purification (AP)

Product Details

Purpose:	ORMDL3 (Human) Recombinant Protein (P01)
Sequence:	MNVGTAHSEV NPNTRVMNSR GIWLSYVLAI GLLHIVLLSI PFVSVPVVWT LTNLIHNMGM YIFLHTVKGT PFETPDQGKA RLLTHWEQMD YGVQFTASRK FLTITPIVLY FLTSFYTKYD QIHFVLNTVS LMSVLIPKLP QLHGVRIFGI NKY
Characteristics:	Human ORMDL3 full-length ORF (NP_644809.1, 1 a.a. - 153 a.a.) recombinant protein with GST-tag at N-terminal.
Purification:	in vitro wheat germ expression system

Target Details

Target:	ORMDL3
Alternative Name:	ORMDL3 (ORMDL3 Products)

Target Details

Background:	Full Gene Name: ORM1-like 3 (<i>S. cerevisiae</i>) Synonyms:
Gene ID:	94103
NCBI Accession:	NM_139280

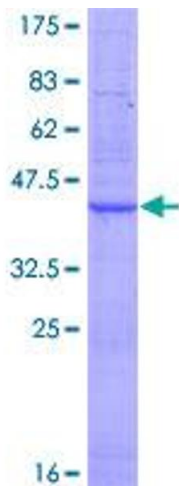
Application Details

Application Notes:	Optimal working dilution should be determined by the investigator.
Comment:	Preparation method: in vitro, wheat germ expression system Product Quality tested by: 12.5% SDS-PAGE Stained with Coomassie Blue.
Restrictions:	For Research Use only

Handling

Buffer:	50 mM Tris-HCl, 10 mM reduced Glutathione, pH =8.0 in the elution buffer.
Handling Advice:	Aliquot to avoid repeated freezing and thawing.
Storage:	-80 °C
Storage Comment:	Best use within three months from the date of receipt of this protein.

Images



SDS-PAGE

Image 1.