

Datasheet for ABIN1800805  
**C1QTNF2 Protein (AA 16-285) (GST tag)**



[Go to Product page](#)

1 Image

Overview

Quantity:	10 µg
Target:	C1QTNF2
Protein Characteristics:	AA 16-285
Origin:	Human
Source:	Wheat germ
Protein Type:	Recombinant
Purification tag / Conjugate:	This C1QTNF2 protein is labelled with GST tag.
Application:	ELISA, Western Blotting (WB), Affinity Purification (AP), Antibody Array (AA)

Product Details

Purpose:	C1QTNF2 (Human) Recombinant Protein (P01)
Sequence:	DPLLGAFARR DFRKGGSPQLV CSLPGPQGPP GPPGAPGPSG MMGRMGFPGK DGQDGHGDR GDSGEEGPPG RTGNRGKPGP KKGAGAIGRA GPRGPKGVNG TPGKHGTPGK KGPKGKKGEP GLPGPCSCGS GHTKSAFSVA VTKSYPRERL PIKFDKILMN EGGHYNASSG KFVCGVPGIY YFTYDITLAN KHLAIGLVHN GQYRIRTFDA NTGNHVDVAG STILALKQGD EVWLQIFYSE QNGLFYDPYW TDSLFTGFLI YADQDDPNEV
Characteristics:	Human C1QTNF2 full-length ORF ( AAH11699.1, 16 a.a. - 285 a.a.) recombinant protein with GST-tag at N-terminal.
Purification:	in vitro wheat germ expression system

## Target Details

Target:	C1QTNF2
Alternative Name:	C1QTNF2 ( <a href="#">C1QTNF2 Products</a> )
Background:	Full Gene Name: C1q and tumor necrosis factor related protein 2 Synonyms: CTRP2,zacrp2
Gene ID:	114898

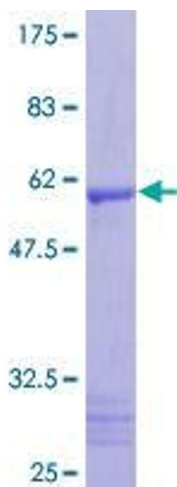
## Application Details

Application Notes:	Optimal working dilution should be determined by the investigator.
Comment:	Preparation method: in vitro, wheat germ expression system Product Quality tested by: 12.5% SDS-PAGE Stained with Coomassie Blue.
Restrictions:	For Research Use only

## Handling

Buffer:	50 mM Tris-HCl, 10 mM reduced Glutathione, pH =8.0 in the elution buffer.
Handling Advice:	Aliquot to avoid repeated freezing and thawing.
Storage:	-80 °C
Storage Comment:	Best use within three months from the date of receipt of this protein.

## Images



### SDS-PAGE

Image 1.