



[Go to Product page](#)

Datasheet for ABIN1801655
SOGA1 Protein (AA 1-518) (GST tag)

1 Image

Overview

Quantity:	10 µg
Target:	SOGA1
Protein Characteristics:	AA 1-518
Origin:	Human
Source:	Wheat germ
Protein Type:	Recombinant
Purification tag / Conjugate:	This SOGA1 protein is labelled with GST tag.
Application:	ELISA, Western Blotting (WB), Affinity Purification (AP), Antibody Array (AA)

Product Details

Purpose:	C20orf117 (Human) Recombinant Protein (P01)
Sequence:	MWDWAPTTSL QEVNKTVLVF ALTQHTDQGG RPECALSVIS TNNDVSSSVL RRTKSVSSMS EFESLLDCSP YLAGGDARGK KLPNNPAFGF VSSEPGDPEK DTKEKPGLSS RDCNHLGALA CQDPPGRQMQ RSYTAPDKTG IRVYYSPPVA RRLGVPVVDH KEGKIIIEPG FLFTTAKPKE SAEADGLAES SYGRWLCNFS RQRLDGGGAG SPSAAGPGFP AALHDFEMSG NMSDDMKEIT NCVRQAMRSG SLERKVKSTS SQTVGLASVG TQTIRTVSVG LQTDPPRSSL HGKAWSRPS SLVSVRSKQI SSSLDKVHSR IERPCCSPKY GSPKLQRRSV SKLDSSKDRS LWNLHQGKQN GSAWARSTTT RDSPVLRNIN DGLSSLFSV VEHSGSTESVW KLGMSSETRAK PEPPKYGIVQ EFFRNVCGRA PSPTSSAGEE GTKKPEPLSP ASYHQPEGVA RILNKKAAKL GSSEEVRLTM LPQVGKDGVL RDGDGAVVLP NEVGGWDLDF LLVGGVSI
Characteristics:	Human C20orf117 full-length ORF (094964, 1 a.a. - 518 a.a.) recombinant protein with GST-tag at N-terminal.

Product Details

Purification: in vitro wheat germ expression system

Target Details

Target: SOGA1

Alternative Name: C20orf117 ([SOGA1 Products](#))

Background: Full Gene Name: chromosome 20 open reading frame 117
Synonyms: FLJ44670,KIAA0889,dJ132F21.1

Gene ID: 140710

UniProt: [O94964](#)

Application Details

Application Notes: Optimal working dilution should be determined by the investigator.

Comment: Preparation method: in vitro, wheat germ expression system
Product Quality tested by: 12.5% SDS-PAGE Stained with Coomassie Blue.

Restrictions: For Research Use only

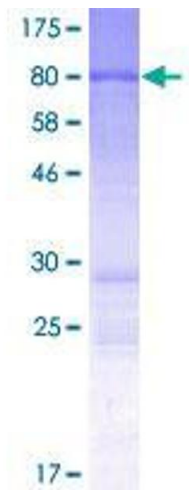
Handling

Buffer: 50 mM Tris-HCl, 10 mM reduced Glutathione, pH =8.0 in the elution buffer.

Handling Advice: Aliquot to avoid repeated freezing and thawing.

Storage: -80 °C

Storage Comment: Best use within three months from the date of receipt of this protein.



SDS-PAGE

Image 1.