

Datasheet for ABIN1801898

Claudin 19 Protein (CLDN19) (AA 29-81) (GST tag)



[Go to Product page](#)

1 Image

Overview

| | |
|-------------------------------|---|
| Quantity: | 10 µg |
| Target: | Claudin 19 (CLDN19) |
| Protein Characteristics: | AA 29-81 |
| Origin: | Human |
| Source: | Wheat germ |
| Protein Type: | Recombinant |
| Purification tag / Conjugate: | This Claudin 19 protein is labelled with GST tag. |
| Application: | ELISA, Western Blotting (WB), Antibody Array (AA), Affinity Purification (AP) |

Product Details

| | |
|------------------|--|
| Purpose: | CLDN19 (Human) Recombinant Protein (Q01) |
| Sequence: | QWKQSSYAGD AITAVGPYE GLWMSCASQS TGQVQCKLYD SLLALDGHQI SAR |
| Characteristics: | Human CLDN19 partial ORF (NP_683763.1, 29 a.a. - 81 a.a.) recombinant protein with GST-tag at N-terminal. |
| Purification: | in vitro wheat germ expression system |

Target Details

| | |
|-------------------|--|
| Target: | Claudin 19 (CLDN19) |
| Alternative Name: | CLDN19 (CLDN19 Products) |
| Background: | Full Gene Name: claudin 19 |

Target Details

Synonyms:

Gene ID: 149461

NCBI Accession: [NM_148960](#)

Pathways: [Cell-Cell Junction Organization](#), [Hepatitis C](#)

Application Details

Application Notes: Optimal working dilution should be determined by the investigator.

Comment: Preparation method: in vitro, wheat germ expression system
Product Quality tested by: 12.5% SDS-PAGE Stained with Coomassie Blue.

Restrictions: For Research Use only

Handling

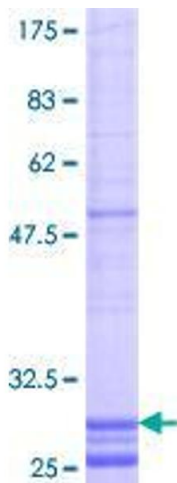
Buffer: 50 mM Tris-HCl, 10 mM reduced Glutathione, pH =8.0 in the elution buffer.

Handling Advice: Aliquot to avoid repeated freezing and thawing.

Storage: -80 °C

Storage Comment: Best use within three months from the date of receipt of this protein.

Images



SDS-PAGE

Image 1.