



[Go to Product page](#)

Datasheet for ABIN1803974

## anti-GLP1R antibody (N-Term)

### 1 Image

#### Overview

Quantity:	50 µg
Target:	GLP1R
Binding Specificity:	N-Term
Reactivity:	Human, Mouse
Host:	Rabbit
Clonality:	Polyclonal
Conjugate:	This GLP1R antibody is un-conjugated
Application:	Western Blotting (WB), Immunohistochemistry (IHC), Immunofluorescence (IF), Immunohistochemistry (Paraffin-embedded Sections) (IHC (p))

#### Product Details

Brand:	IHC-plus™
Immunogen:	Synthetic 16 amino acid peptide from N-terminal extracellular domain of human GLP1R. Percent identity with other species by BLAST analysis: Human, Gorilla, Gibbon, Monkey (100%), Mouse, Bovine, Hamster, Elephant, Rabbit, Pig (94%), Rat, Dog, Bat, Panda (88%).  Type of Immunogen: Synthetic peptide
Specificity:	Human GLP1R. BLAST analysis of the peptide immunogen showed no homology with other human proteins, except RUSC2 (44 %).
Purification:	Immunoaffinity purified

## Target Details

---

Target:	GLP1R
Alternative Name:	GLP1R/GLP-1R/GLP-1 Receptor ( <a href="#">GLP1R Products</a> )
Background:	Name/Gene ID: GLP1R Subfamily: Glucagon Family: GPCR  Synonyms: GLP1R, GLP-1-R, GLP-1 receptor, GLP-1R, GLP-I receptor, Glp1 receptor
Gene ID:	2740
Pathways:	<a href="#">Positive Regulation of Peptide Hormone Secretion</a> , <a href="#">Hormone Transport</a> , <a href="#">cAMP Metabolic Process</a> , <a href="#">Feeding Behaviour</a>

## Application Details

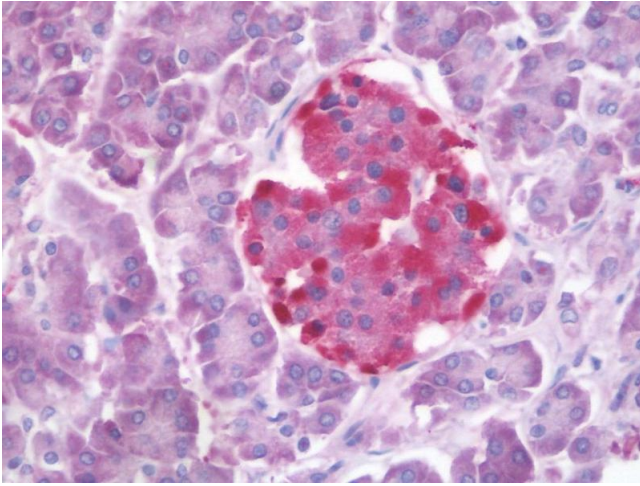
---

Application Notes:	Approved: IF, IHC, IHC-P (15 - 20 µg/mL), WB
Comment:	Target Species of Antibody: Human
Restrictions:	For Research Use only

## Handling

---

Format:	Liquid
Concentration:	Lot specific
Buffer:	PBS, less than 0.1 % sodium azide.
Preservative:	Sodium azide
Precaution of Use:	This product contains Sodium azide: a POISONOUS AND HAZARDOUS SUBSTANCE which should be handled by trained staff only.
Handling Advice:	Avoid repeated freezing and thawing.
Storage:	4 °C, -20 °C
Storage Comment:	Aliquot and store undiluted at -20°C or below for up to 1 year. Can be stored undiluted at 4°C for up to 1 month. Avoid freeze-thaw cycles.
Expiry Date:	12 months



### Immunohistochemistry

**Image 1.** Human Pancreas: Formalin-Fixed, Paraffin-Embedded (FFPE)