



[Go to Product page](#)

Datasheet for ABIN1803982

anti-Apelin Receptor antibody (Cytoplasmic Domain)

1 Image

Overview

Quantity:	50 µg
Target:	Apelin Receptor (APLNR)
Binding Specificity:	Cytoplasmic Domain
Reactivity:	Human, Mouse
Host:	Rabbit
Clonality:	Polyclonal
Conjugate:	This Apelin Receptor antibody is un-conjugated
Application:	Immunohistochemistry (IHC), Immunohistochemistry (Paraffin-embedded Sections) (IHC (p))

Product Details

Brand:	IHC-plus™
Immunogen:	Synthetic 20 amino acid peptide from 3rd cytoplasmic domain of human Apelin Receptor. Percent identity with other species by BLAST analysis: Human, Gorilla, Orangutan, Gibbon, Monkey, Marmoset, Mouse, Rat, Hamster, Panda, Bat, Horse, Rabbit (100%), Elephant (95%), Platypus (90%). Type of Immunogen: Synthetic peptide
Specificity:	Human Apelin Receptor. BLAST analysis of the peptide immunogen showed no homology with other human proteins.
Purification:	Immunoaffinity purified

Target Details

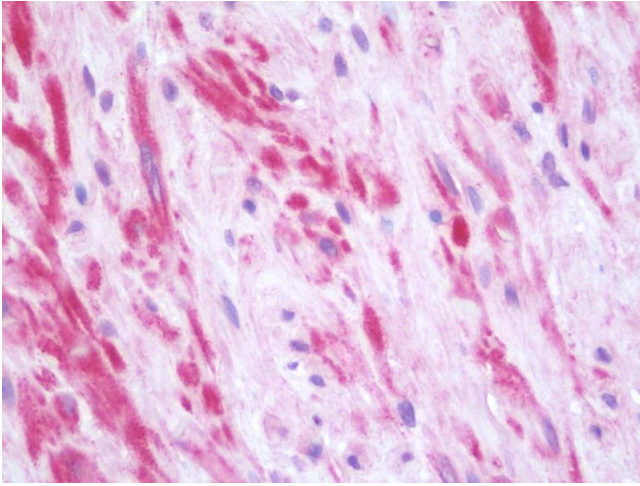
Target:	Apelin Receptor (APLNR)
Alternative Name:	APLNR/ Apelin Receptor / APJ (APLNR Products)
Background:	Name/Gene ID: APLNR Subfamily: Apelin Family: GPCR Synonyms: APLNR, AGTRL1, Angiotensin receptor-like 1, Angiotensin II receptor-like 1, Apelin receptor, APJ, APJ (apelin) receptor, APJR, G protein-coupled receptor APJ, HG11 orphan receptor, HG11, APJ receptor, G-protein coupled receptor APJ
Gene ID:	187

Application Details

Application Notes:	Approved: IHC, IHC-P (20 µg/mL)
Comment:	Target Species of Antibody: Human
Restrictions:	For Research Use only

Handling

Format:	Liquid
Concentration:	Lot specific
Buffer:	PBS, less than 0.1 % sodium azide.
Preservative:	Sodium azide
Precaution of Use:	This product contains Sodium azide: a POISONOUS AND HAZARDOUS SUBSTANCE which should be handled by trained staff only.
Handling Advice:	Avoid repeated freezing and thawing.
Storage:	4 °C, -20 °C
Storage Comment:	Aliquot and store undiluted at -20°C or below for up to 1 year. Can be stored undiluted at 4°C for up to 1 month. Avoid freeze-thaw cycles.
Expiry Date:	12 months



Immunohistochemistry

Image 1. Human Prostate: Formalin-Fixed, Paraffin-Embedded (FFPE)