

Datasheet for ABIN1804036  
**anti-SENP1 antibody (AA 28-59)**

## 2 Images

[Go to Product page](#)

## Overview

Quantity:	200 µL
Target:	SENP1
Binding Specificity:	AA 28-59
Reactivity:	Human
Host:	Rabbit
Clonality:	Polyclonal
Conjugate:	This SENP1 antibody is un-conjugated
Application:	Western Blotting (WB), Immunohistochemistry (IHC), Immunohistochemistry (Paraffin-embedded Sections) (IHC (p))

## Product Details

Brand:	IHC-plus™
Specificity:	This SENP1 antibody is generated from rabbits immunized with a KLH conjugated synthetic peptide between 28-59 amino acids from the N-terminal region of human SENP1.
Purification:	Ammonium sulfate precipitation

## Target Details

Target:	SENP1
Alternative Name:	SENP1 ( <a href="#">SENP1 Products</a> )
Background:	Name/Gene ID: SENP1 Subfamily: Cysteine C48

## Target Details

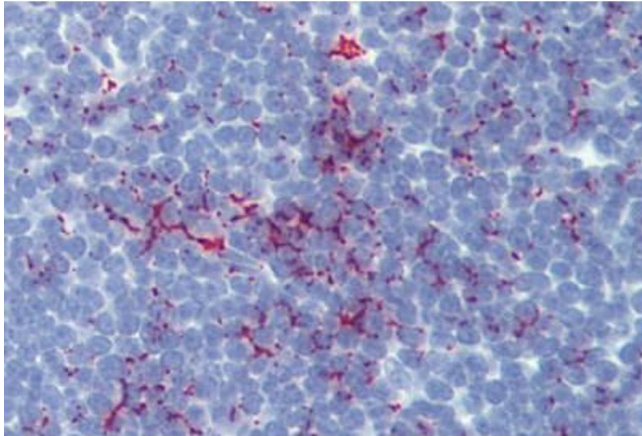
	Family: Protease
	Synonyms: SENP1, Sentrin-specific protease 1, SuPr-2
Gene ID:	29843
UniProt:	<a href="#">Q9P0U3</a>
Pathways:	<a href="#">Positive Regulation of Endopeptidase Activity</a>

## Application Details

Application Notes:	Approved: IHC, IHC-P (10 µg/mL), WB (1:1000)  Usage: Immunohistochemistry: This antibody was validated for use in immunohistochemistry on a panel of 21 formalin-fixed, paraffin-embedded (FFPE) human tissues after heat induced antigen retrieval in pH 6.0 citrate buffer. After incubation with the primary antibody, slides were incubated with biotinylated secondary antibody, followed by alkaline phosphatase-streptavidin and chromogen. The stained slides were evaluated by a pathologist to confirm staining specificity. The optimal working concentration for this antibody was determined to be 10 µg/mL.
Comment:	Target Species of Antibody: Human
Restrictions:	For Research Use only

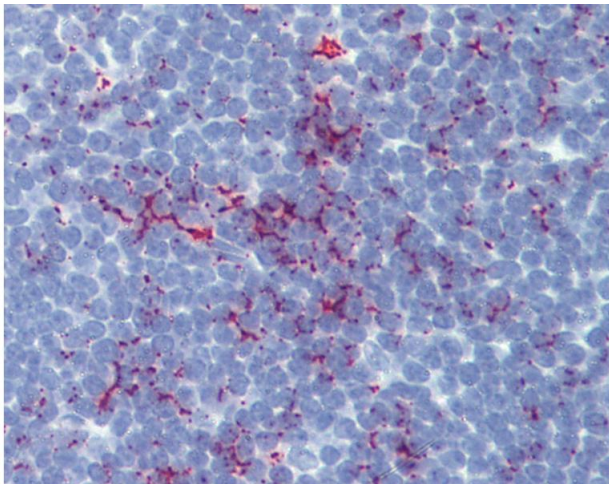
## Handling

Format:	Liquid
Concentration:	Lot specific
Buffer:	PBS, 0.09 % sodium azide
Preservative:	Sodium azide
Precaution of Use:	This product contains Sodium azide: a POISONOUS AND HAZARDOUS SUBSTANCE which should be handled by trained staff only.
Storage:	4 °C, -20 °C
Storage Comment:	Maintain refrigerated at 2-8°C for up to 6 months. For long term storage store at -20°C.
Expiry Date:	6 months



#### Immunohistochemistry

**Image 1.** Anti-SENP1 antibody IHC of human thymus. Immunohistochemistry of formalin-fixed, paraffin-embedded tissue after heat-induced antigen retrieval. Antibody ABIN1804036 concentration 10 µg/mL.



#### Immunohistochemistry

**Image 2.** Anti-SENP1 antibody IHC of human thymus. Immunohistochemistry of formalin-fixed, paraffin-embedded tissue after heat-induced antigen retrieval. Antibody concentration 10 ug/ml.