

Datasheet for ABIN1804042  
**anti-ABCB5 antibody (AA 1-30)**[Go to Product page](#)

## 2 Images

## Overview

Quantity:	200 µL
Target:	ABCB5
Binding Specificity:	AA 1-30
Reactivity:	Human
Host:	Rabbit
Clonality:	Polyclonal
Conjugate:	This ABCB5 antibody is un-conjugated
Application:	Western Blotting (WB), Immunohistochemistry (IHC), Flow Cytometry (FACS), Immunohistochemistry (Paraffin-embedded Sections) (IHC (p))

## Product Details

Brand:	IHC-plus™
Specificity:	This ABCB5 antibody is generated from rabbits immunized with a KLH conjugated synthetic peptide between 1-30 amino acids from the N-terminal region of human ABCB5.
Purification:	Ammonium sulfate precipitation

## Target Details

Target:	ABCB5
Alternative Name:	ABCB5 ( <a href="#">ABCB5 Products</a> )
Background:	Name/Gene ID: ABCB5 Subfamily: ATP-binding cassette - ABCB/MDR

## Target Details

Family: Transporter

Synonyms: ABCB5, ABCB5alpha, ABCB5 P-gp, ABCB5beta, ATP-binding cassette protein, EST422562, P-glycoprotein ABCB5

Gene ID: 340273

UniProt: [Q2M3G0](#)

## Application Details

Application Notes: Approved: Flo (1:10 - 1:50), IHC, IHC-P (10 µg/mL), WB (1:1000)

Usage: Immunohistochemistry: This antibody was validated for use in immunohistochemistry on a panel of 21 formalin-fixed, paraffin-embedded (FFPE) human tissues after heat induced antigen retrieval in pH 6.0 citrate buffer. After incubation with the primary antibody, slides were incubated with biotinylated secondary antibody, followed by alkaline phosphatase-streptavidin and chromogen. The stained slides were evaluated by a pathologist to confirm staining specificity. The optimal working concentration for this antibody was determined to be 10 µg/mL.

Comment: Target Species of Antibody: Human

Restrictions: For Research Use only

## Handling

Format: Liquid

Concentration: Lot specific

Buffer: PBS, 0.09 % sodium azide

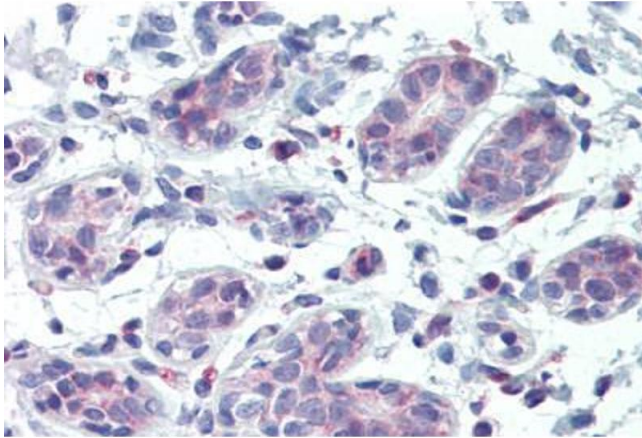
Preservative: Sodium azide

Precaution of Use: This product contains Sodium azide: a POISONOUS AND HAZARDOUS SUBSTANCE which should be handled by trained staff only.

Storage: 4 °C, -20 °C

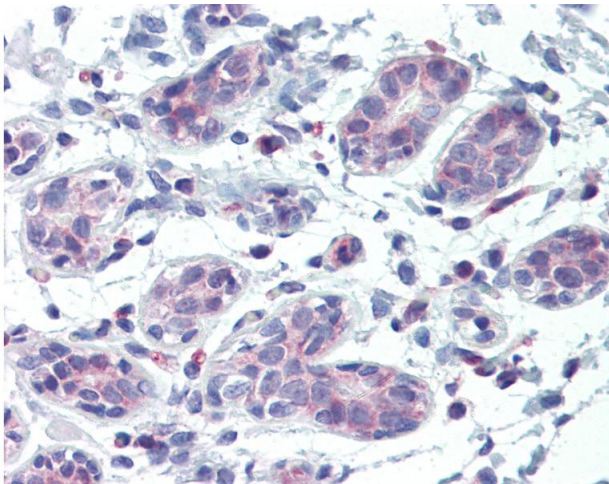
Storage Comment: Maintain refrigerated at 2-8°C for up to 6 months. For long term storage store at -20°C.

Expiry Date: 6 months



#### Immunohistochemistry

**Image 1.** Anti-ABCB5 antibody IHC of human breast. Immunohistochemistry of formalin-fixed, paraffin-embedded tissue after heat-induced antigen retrieval. Antibody ABIN1804042 concentration 10 µg/mL.



#### Immunohistochemistry

**Image 2.** Anti-ABCB5 antibody IHC of human breast. Immunohistochemistry of formalin-fixed, paraffin-embedded tissue after heat-induced antigen retrieval. Antibody concentration 10 ug/ml.