

Datasheet for ABIN1804049  
**anti-Connexin 31 antibody (C-Term)**[Go to Product page](#)

## 2 Images

## Overview

Quantity:	50 µg
Target:	Connexin 31 (GJB3)
Binding Specificity:	C-Term
Reactivity:	Mouse
Host:	Rabbit
Clonality:	Polyclonal
Conjugate:	This Connexin 31 antibody is un-conjugated
Application:	Western Blotting (WB), Immunohistochemistry (IHC), Immunofluorescence (IF), Immunohistochemistry (Paraffin-embedded Sections) (IHC (p))

## Product Details

Brand:	IHC-plus™
Immunogen:	Synthetic peptide derived from the C-terminal region of mouse connexin 3 protein.  Type of Immunogen: Synthetic peptide
Isotype:	IgG
Specificity:	Reacts with the ~32kD mouse connexin 31 on Western blots. The band observed at ~62kD is probably due to dimerization of connexin 31. Several higher bands of unknown origin are observed in western blots of mouse skin homogenates. Reactivity has been confirmed with mouse skin homogenate.
Purification:	Immunoaffinity purified

## Target Details

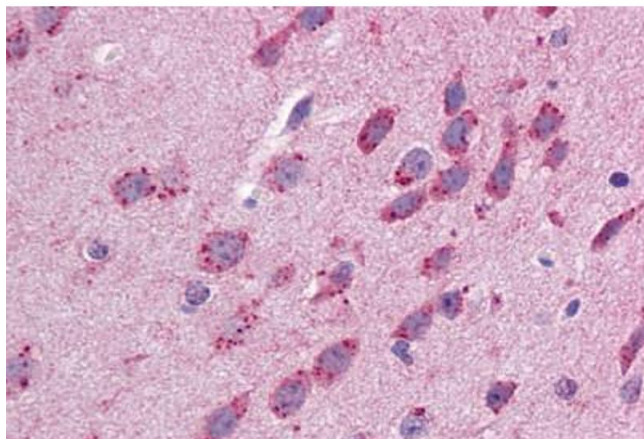
Target:	Connexin 31 (GJB3)
Alternative Name:	GJB3 / CX31 / Connexin 31 ( <a href="#">GJB3 Products</a> )
Background:	Name/Gene ID: GJB3 Subfamily: Connexin Family: Ion Channel  Synonyms: GJB3, Connexin 31, Connexin-31, CX31, DFNA2, Erythrokeratoderma variabilis, Gap junction beta-3 protein, DFNA2B, EKV, Gap junction protein beta 3
Gene ID:	2707
UniProt:	<a href="#">O75712</a>
Pathways:	<a href="#">Sensory Perception of Sound</a>

## Application Details

Application Notes:	Approved: IF (1 - 3 µg/mL), IHC, IHC-P (5 µg/mL), WB (1 - 3 µg/mL)  Usage: Suitable for use in Immunofluorescence, Western Blot, Immunohistochemistry. Immunofluorescence: 1-3 µg/mL. Western Blot: 1-3 µg/mL. Immunohistochemistry: 1-3 µg/mL.
Comment:	Target Species of Antibody: Mouse
Restrictions:	For Research Use only

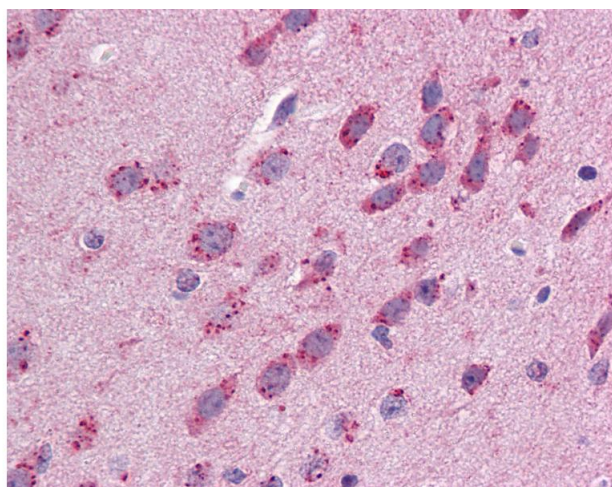
## Handling

Format:	Liquid
Concentration:	Lot specific
Buffer:	PBS, pH 7.4, 0.09 % sodium azide.
Preservative:	Sodium azide
Precaution of Use:	This product contains Sodium azide: a POISONOUS AND HAZARDOUS SUBSTANCE which should be handled by trained staff only.
Handling Advice:	Avoid repeated freezing and thawing.
Storage:	4 °C,-20 °C
Storage Comment:	Short term: 4°C. Long term: Store at -20°C. Avoid freeze-thaw cycles.



#### Immunohistochemistry

**Image 1.** Anti-GJB3 antibody IHC of mouse brain. Immunohistochemistry of formalin-fixed, paraffin-embedded tissue after heat-induced antigen retrieval. Antibody ABIN1804049 concentration 5 µg/mL.



#### Immunohistochemistry

**Image 2.** Anti-GJB3 antibody IHC of mouse brain. Immunohistochemistry of formalin-fixed, paraffin-embedded tissue after heat-induced antigen retrieval. Antibody concentration 5 ug/ml.