

Datasheet for ABIN1804075  
**anti-PYGM antibody (AA 698-727)**

## 2 Images

[Go to Product page](#)

## Overview

Quantity:	200 µL
Target:	PYGM
Binding Specificity:	AA 698-727
Reactivity:	Human
Host:	Rabbit
Clonality:	Polyclonal
Conjugate:	This PYGM antibody is un-conjugated
Application:	Western Blotting (WB), Immunohistochemistry (IHC), Immunohistochemistry (Paraffin-embedded Sections) (IHC (p))

## Product Details

Brand:	IHC-plus™
Specificity:	This PYGM antibody is generated from rabbits immunized with a KLH conjugated synthetic peptide between 698-727 amino acids from the C-terminal region of human PYGM.
Purification:	Ammonium sulfate precipitation

## Target Details

Target:	PYGM
Alternative Name:	PYGM ( <a href="#">PYGM Products</a> )
Background:	Name/Gene ID: PYGM

## Target Details

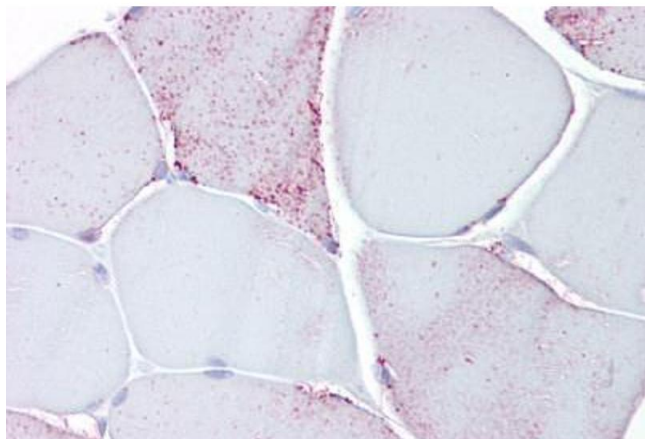
	Synonyms: PYGM, GPMM, Myophosphorylase, Phosphorylase, glycogen muscle
Gene ID:	5837
UniProt:	<a href="#">P11217</a>
Pathways:	<a href="#">Cellular Glucan Metabolic Process</a>

## Application Details

Application Notes:	Approved: IHC, IHC-P (10 µg/mL), WB (1:1000)
Comment:	Target Species of Antibody: Human
Restrictions:	For Research Use only

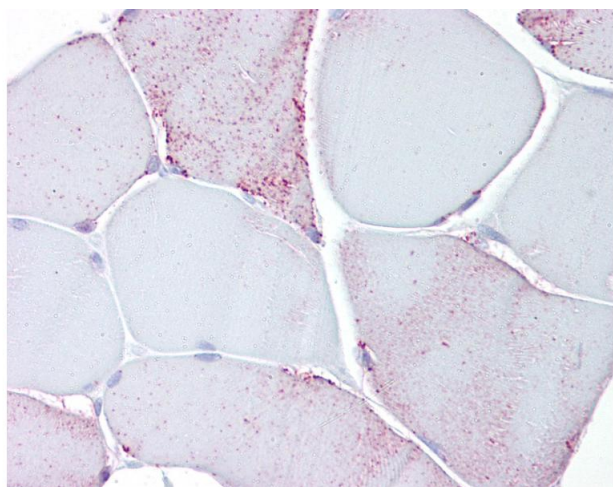
## Handling

Format:	Liquid
Concentration:	Lot specific
Buffer:	PBS, 0.09 % sodium azide
Preservative:	Sodium azide
Precaution of Use:	This product contains Sodium azide: a POISONOUS AND HAZARDOUS SUBSTANCE which should be handled by trained staff only.
Handling Advice:	Avoid repeated freezing and thawing.
Storage:	4 °C,-20 °C
Storage Comment:	Short term: 4°C. Long term: Store at -20°C. Avoid freeze-thaw cycles.



#### Immunohistochemistry

**Image 1.** Anti-PYGM / Phosphorylase b antibody IHC of human skeletal muscle. Immunohistochemistry of formalin-fixed, paraffin-embedded tissue after heat-induced antigen retrieval. Antibody ABIN1804075 concentration 10 µg/mL.



#### Immunohistochemistry

**Image 2.** Anti-PYGM / Phosphorylase b antibody IHC of human skeletal muscle. Immunohistochemistry of formalin-fixed, paraffin-embedded tissue after heat-induced antigen retrieval. Antibody concentration 10 ug/ml.