

Datasheet for ABIN1804101  
**anti-Complement C4c antibody**

## 2 Images

[Go to Product page](#)

## Overview

Quantity:	50 µg
Target:	Complement C4c (C4c)
Reactivity:	Human
Host:	Mouse
Clonality:	Monoclonal
Conjugate:	This Complement C4c antibody is un-conjugated
Application:	Western Blotting (WB), Immunohistochemistry (IHC), Flow Cytometry (FACS), ELISA, Immunohistochemistry (Frozen Sections) (IHC (fro)), Immunohistochemistry (Paraffin-embedded Sections) (IHC (p))

## Product Details

Brand:	IHC-plus™
Immunogen:	Purified human C4c.
Clone:	10-12
Isotype:	IgG1
Specificity:	Recognizes complement component 4c (C4c). The complement 1 complex cleaves complement 4 (C4) to form C4b and C4a. C4b levels are strictly regulated. Single site cleavage of the C4b's alpha chain by Factor I forms iC4b and blocks C3 convertase, inhibiting opsonization and activation of the classical pathway. iC4b is further degraded into the inactive fragments C4d and C4c. C4c consists of two a-chain fragments, alpha 4 (13 kD) and alpha 3 (25 kD) linked to a beta chain through disulphide bridges and a gamma chain. It is expressed in

## Product Details

the blood plasma. Binds both C4c and C4 and so is not suitable for all ELISA applications.

Purification: Protein A purified from ascites

## Target Details

Target: Complement C4c (C4c)

Alternative Name: Complement C4c ([C4c Products](#))

## Application Details

Application Notes: Approved: ELISA, Flo, IHC, IHC-Fr, IHC-P (10 µg/mL), WB

Usage: ELISA: Binds both C4c and C4 and so is not suitable for all ELISA applications.

Comment: Target Species of Antibody: Human

Restrictions: For Research Use only

## Handling

Format: Liquid

Concentration: Lot specific

Buffer: Borate buffered saline, 0.09 % sodium azide

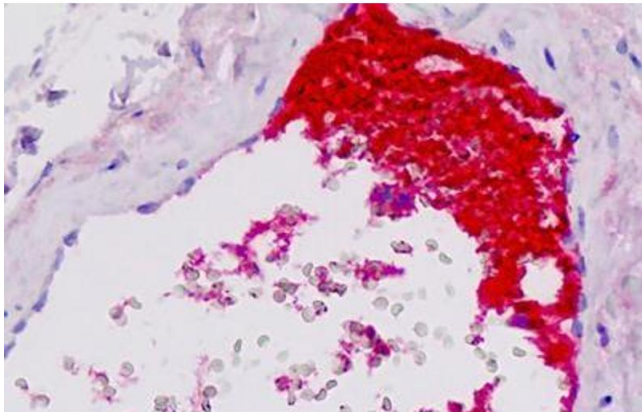
Preservative: Sodium azide

Precaution of Use: This product contains Sodium azide: a POISONOUS AND HAZARDOUS SUBSTANCE which should be handled by trained staff only.

Handling Advice: Aliquot to avoid repeated freezing and thawing. Store undiluted.

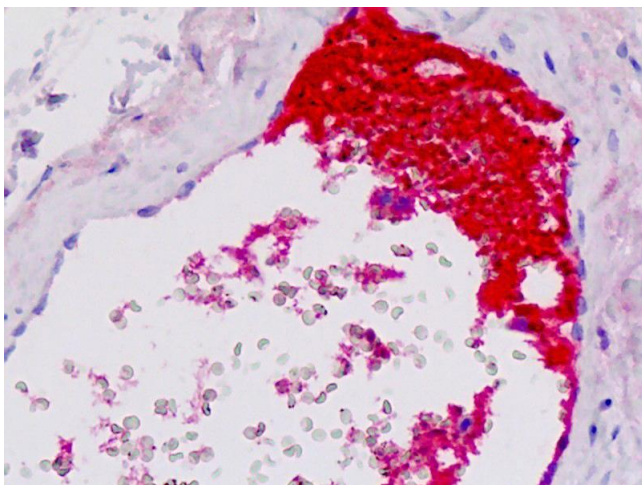
Storage: 4 °C, -20 °C

Storage Comment: Short term 4°C, long term aliquot and store at -20°C, avoid freeze-thaw cycles. Store undiluted.



#### Immunohistochemistry

**Image 1.** Human Vessel: Formalin-Fixed, Paraffin-Embedded (FFPE)



#### Immunohistochemistry

**Image 2.** Anti-Complement C4c antibody IHC staining of human vessel. Immunohistochemistry of formalin-fixed, paraffin-embedded tissue after heat-induced antigen retrieval.