

Datasheet for ABIN1804117
anti-STAT2 antibody (C-Term)

2 Images

[Go to Product page](#)

Overview

Quantity:	50 µg
Target:	STAT2
Binding Specificity:	C-Term
Reactivity:	Human, Mouse
Host:	Mouse
Clonality:	Monoclonal
Conjugate:	This STAT2 antibody is un-conjugated
Application:	Western Blotting (WB), ELISA, Immunohistochemistry (IHC), Immunohistochemistry (Paraffin-embedded Sections) (IHC (p))

Product Details

Brand:	IHC-plus™
Immunogen:	This monoclonal antibody was produced by repeated immunizations with a synthetic peptide corresponding to residues near the carboxy terminus of mouse STAT2 protein. Type of Immunogen: Synthetic peptide
Clone:	19G8-H2-H6
Isotype:	IgG2a kappa
Specificity:	This Protein-A purified antibody is directed against human STAT2 protein. A BLAST analysis was used to suggest cross-reactivity with STAT2 protein from human, rat (73 %) and mouse (76 %), sources based on homology with the immunizing sequence. Reactivity against

Product Details

homologues from other sources is not known.

Purification: Protein A purified

Sterility: Sterile filtered

Target Details

Target: STAT2

Alternative Name: STAT2 ([STAT2 Products](#))

Background: Name/Gene ID: STAT2

Synonyms: STAT2, ISGF-3, STAT113, p113

Gene ID: 6773

UniProt: [P52630](#)

Pathways: [JAK-STAT Signaling](#), [Hepatitis C](#), [CXCR4-mediated Signaling Events](#)

Application Details

Application Notes: Approved: ELISA (1:5000 - 1:10000), IHC, IHC-P (10 µg/mL), WB (1:1000)

Usage: This Protein-A purified antibody has been tested for use in ELISA and western blotting. Specific conditions for reactivity should be optimized by the end user. Expect a band approximately 113 kD in size corresponding to STAT2 protein by western blotting in the appropriate cell lysate or extract.

Comment: Target Species of Antibody: Mouse

Restrictions: For Research Use only

Handling

Format: Liquid

Concentration: Lot specific

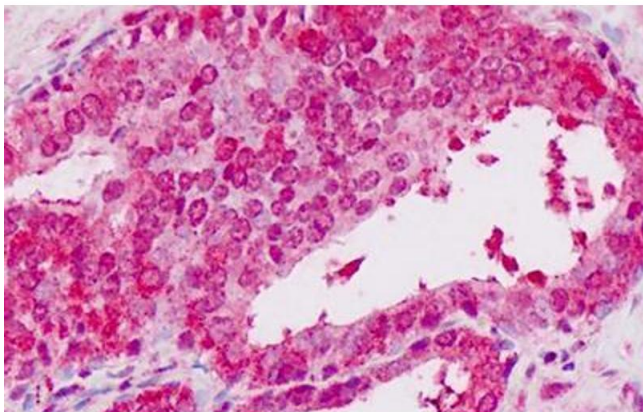
Buffer: 0.02 M potassium phosphate, 0.15 M sodium chloride, pH 7.2, 0.01 % sodium azide, sterile filtered

Preservative: Sodium azide

Handling

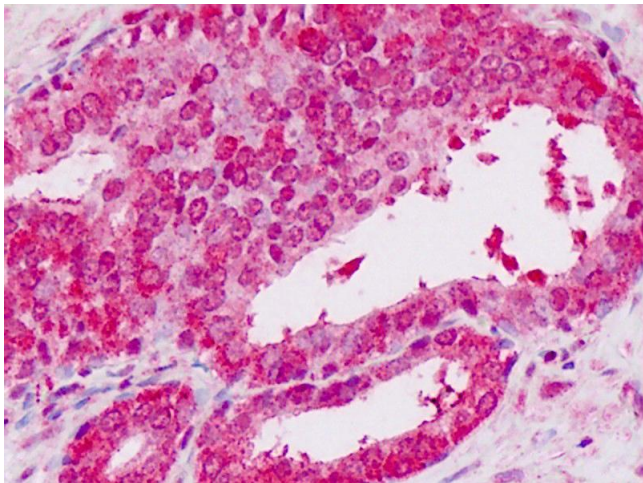
Precaution of Use:	This product contains Sodium azide: a POISONOUS AND HAZARDOUS SUBSTANCE which should be handled by trained staff only.
Handling Advice:	Aliquot to avoid repeated freezing and thawing.
Storage:	4 °C,-20 °C
Storage Comment:	Short term 4°C, long term aliquot and store at -20°C, avoid freeze-thaw cycles.

Images



Immunohistochemistry

Image 1. Human Prostate: Formalin-Fixed, Paraffin-Embedded (FFPE)



Immunohistochemistry

Image 2. Anti-STAT2 antibody IHC staining of human prostate. Immunohistochemistry of formalin-fixed, paraffin-embedded tissue after heat-induced antigen retrieval.