

Datasheet for ABIN1804161
anti-RNASET2 antibody (C-Term)[Go to Product page](#)

2 Images

Overview

Quantity:	0.05 mg
Target:	RNASET2
Binding Specificity:	C-Term
Reactivity:	Human
Host:	Rabbit
Clonality:	Polyclonal
Conjugate:	This RNASET2 antibody is un-conjugated
Application:	Western Blotting (WB), Immunohistochemistry (IHC), Immunohistochemistry (Paraffin-embedded Sections) (IHC (p))

Product Details

Brand:	IHC-plus™
Isotype:	IgG
Purification:	Immunoaffinity purified

Target Details

Target:	RNASET2
Alternative Name:	RNASET2 (RNASET2 Products)
Background:	Name/Gene ID: RNASET2

Synonyms: RNASET2, BA514012.3, Ribonuclease 6, RNASE6PL, Ribonuclease T2, RP11-

Target Details

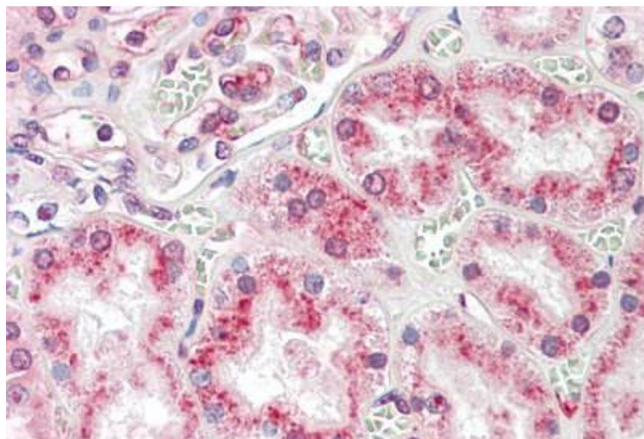
	514012.3
Gene ID:	8635
UniProt:	O00584

Application Details

Application Notes:	Approved: IHC, IHC-P (5 µg/mL), WB (0.5 - 1 µg/mL) Usage: RNASET2 antibody can be used for detection of FOXRED2 by Western blot at 0.5-1 µg/mL.
Comment:	Target Species of Antibody: Human
Restrictions:	For Research Use only

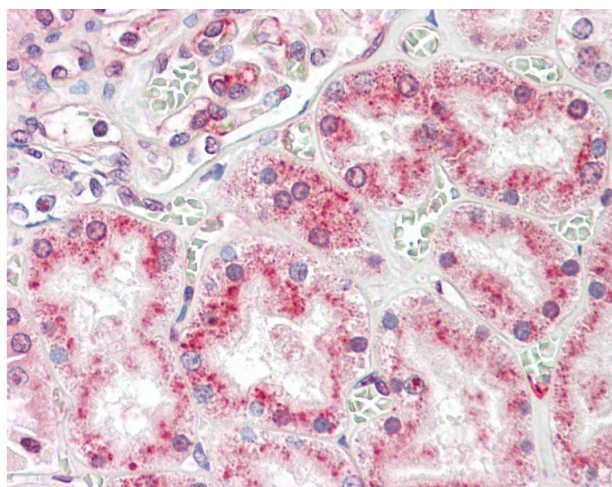
Handling

Format:	Liquid
Concentration:	Lot specific
Buffer:	PBS, 0.02 % sodium azide
Preservative:	Sodium azide
Precaution of Use:	This product contains Sodium azide: a POISONOUS AND HAZARDOUS SUBSTANCE which should be handled by trained staff only.
Handling Advice:	Avoid repeated freezing and thawing.
Storage:	4 °C,-20 °C
Storage Comment:	Store at 4°C for 3 months and -20°C, stable for up to 1 year. Avoid repeated freeze-thaw cycles.
Expiry Date:	12 months



Immunohistochemistry

Image 1. Human Kidney: Formalin-Fixed, Paraffin-Embedded (FFPE)



Immunohistochemistry

Image 2. Anti-RNASET2 antibody IHC staining of human kidney. Immunohistochemistry of formalin-fixed, paraffin-embedded tissue after heat-induced antigen retrieval.