



[Go to Product page](#)

Datasheet for ABIN1804164
anti-YPEL2 antibody (N-Term)

1 Image

Overview

Quantity:	0.05 mg
Target:	YPEL2
Binding Specificity:	N-Term
Reactivity:	Human
Host:	Rabbit
Clonality:	Polyclonal
Conjugate:	This YPEL2 antibody is un-conjugated
Application:	Western Blotting (WB), Immunohistochemistry (Paraffin-embedded Sections) (IHC (p)), Immunohistochemistry (IHC)

Product Details

Brand:	IHC-plus™
Isotype:	IgG
Purification:	Immunoaffinity purified

Target Details

Target:	YPEL2
Alternative Name:	YPEL2 (YPEL2 Products)
Background:	Name/Gene ID: YPEL2

Synonyms: YPEL2, Yippee-like 2 (Drosophila), FKSG4, Protein yippee-like 2

Target Details

Gene ID: 388403

UniProt: [Q96QA6](#)

Application Details

Application Notes: Approved: IHC, IHC-P (5 µg/mL), WB (1 - 2 µg/mL)

Usage: YPEL2 antibody can be used for detection of YPEL2 by Western blot at 1-2 µg/mL.

Comment: Target Species of Antibody: Human

Restrictions: For Research Use only

Handling

Format: Liquid

Concentration: Lot specific

Buffer: PBS, 0.02 % sodium azide

Preservative: Sodium azide

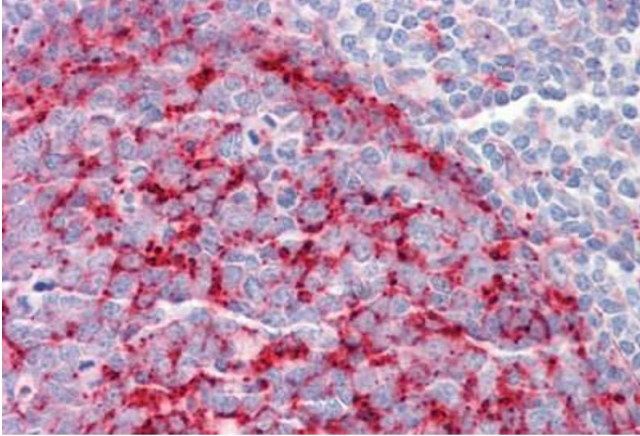
Precaution of Use: This product contains Sodium azide: a POISONOUS AND HAZARDOUS SUBSTANCE which should be handled by trained staff only.

Handling Advice: Avoid repeated freezing and thawing.

Storage: 4 °C, -20 °C

Storage Comment: Store at 4°C for 3 months and -20°C, stable for up to 1 year. Avoid repeated freeze-thaw cycles.

Expiry Date: 12 months



Immunohistochemistry

Image 1. Human Tonsil: Formalin-Fixed, Paraffin-Embedded (FFPE)